

Retrieving your BSUoS BPA and BCR reports from National Grid via SFTP



15th June 2018
Nick Everitt

Overview

- National Grid manage the BSUoS charging function.
- BSUoS invoices and backing sheets are sent out to participants via email.
- BPA and BCR reports are available via Secure FTP.
- If you need to change your email address that receives BSUoS invoices or have any other BSUoS related queries please contact the team using the details below.

Email: [**BSUoS.Queries@nationalgrid.com**](mailto:BSUoS.Queries@nationalgrid.com)

Web: [**www.nationalgrid.com/bsuos**](http://www.nationalgrid.com/bsuos)

Tel: **+44 (0)1926 654 613**

How Do I Connect

- You will need a Client Application with SFTP functionality to access our server.
 - Typical application options include (but not limited to):
 - FileZilla
 - WINSCP
 - CoreFTP
- **We will send you your credentials (Username and Password) once you have confirmed your BSC Party ID and contact details with us.**

BSUoS.Queries@nationalgrid.com

Server Details

- The SFTP server was moved to a new address in May 2018 so please check the details below if you are having any issues connecting to this service.
- Please use the DNS address below within your SFTP client, the IP address is provided for firewall purposes only.

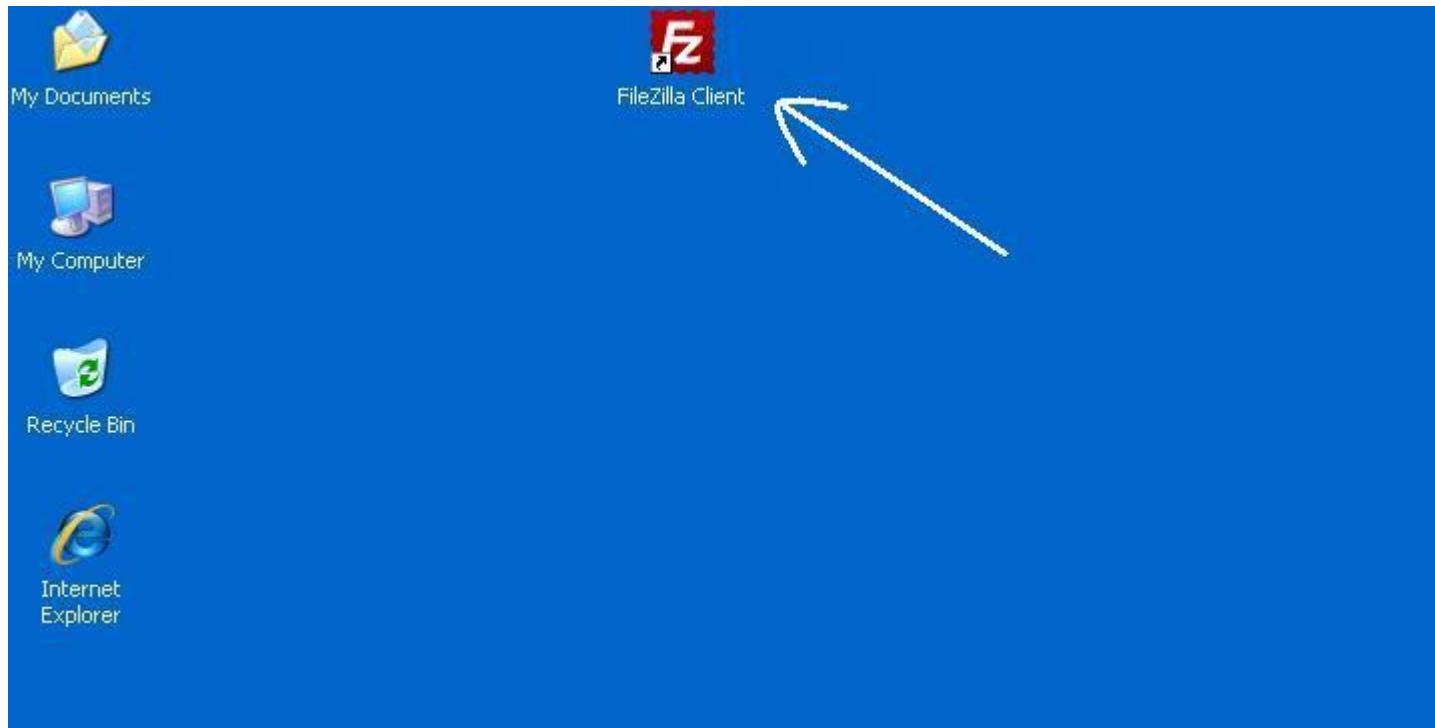
SFTP Address: **sharedservicesftp.natgrid.co.uk**

Current IP: **62.189.190.7**

(for firewall purposes)

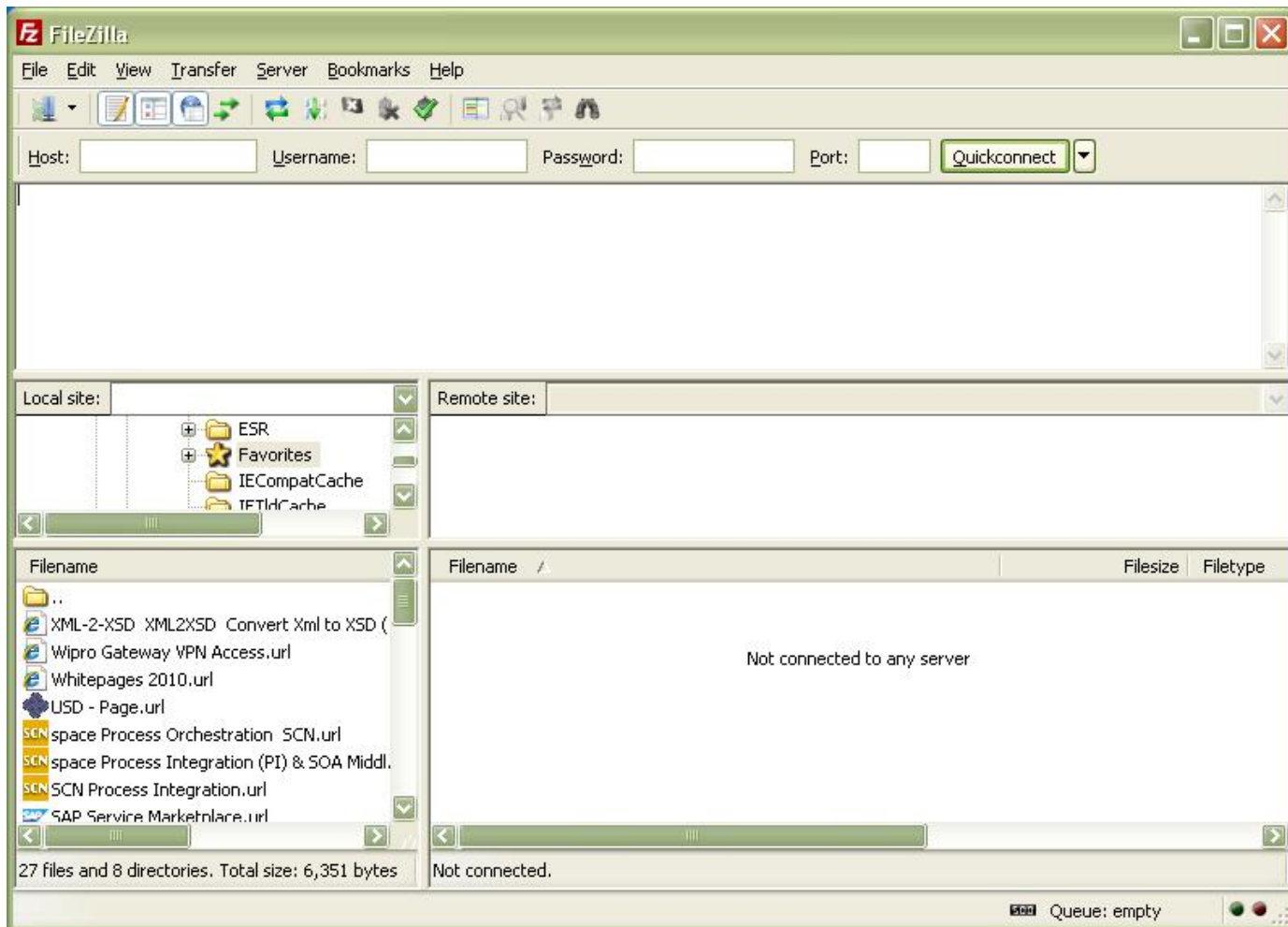
Step by Step Procedure

- Open your SFTP client application:



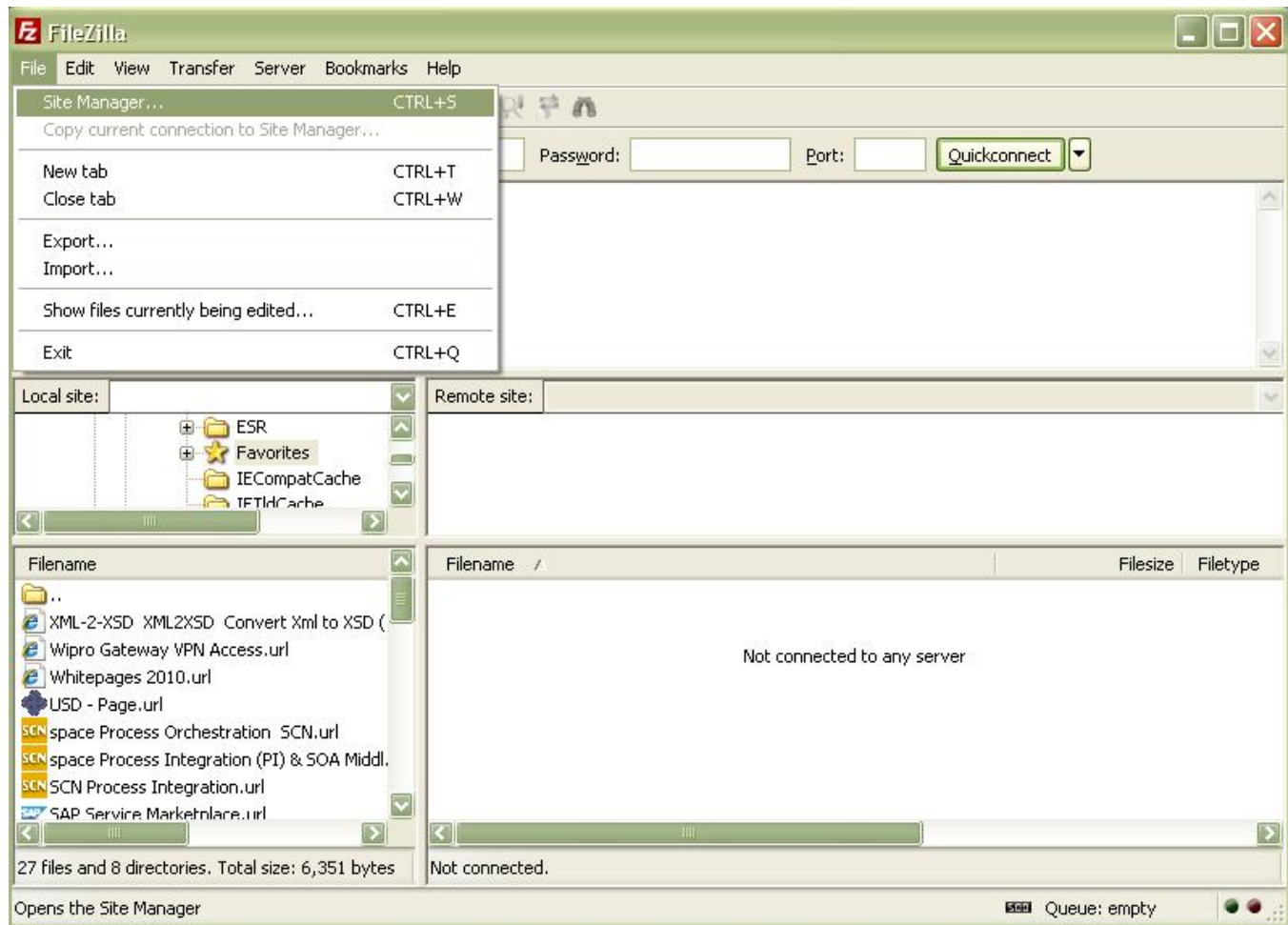
Step by Step Procedure

- Following screen will open (*may vary from application to application*)



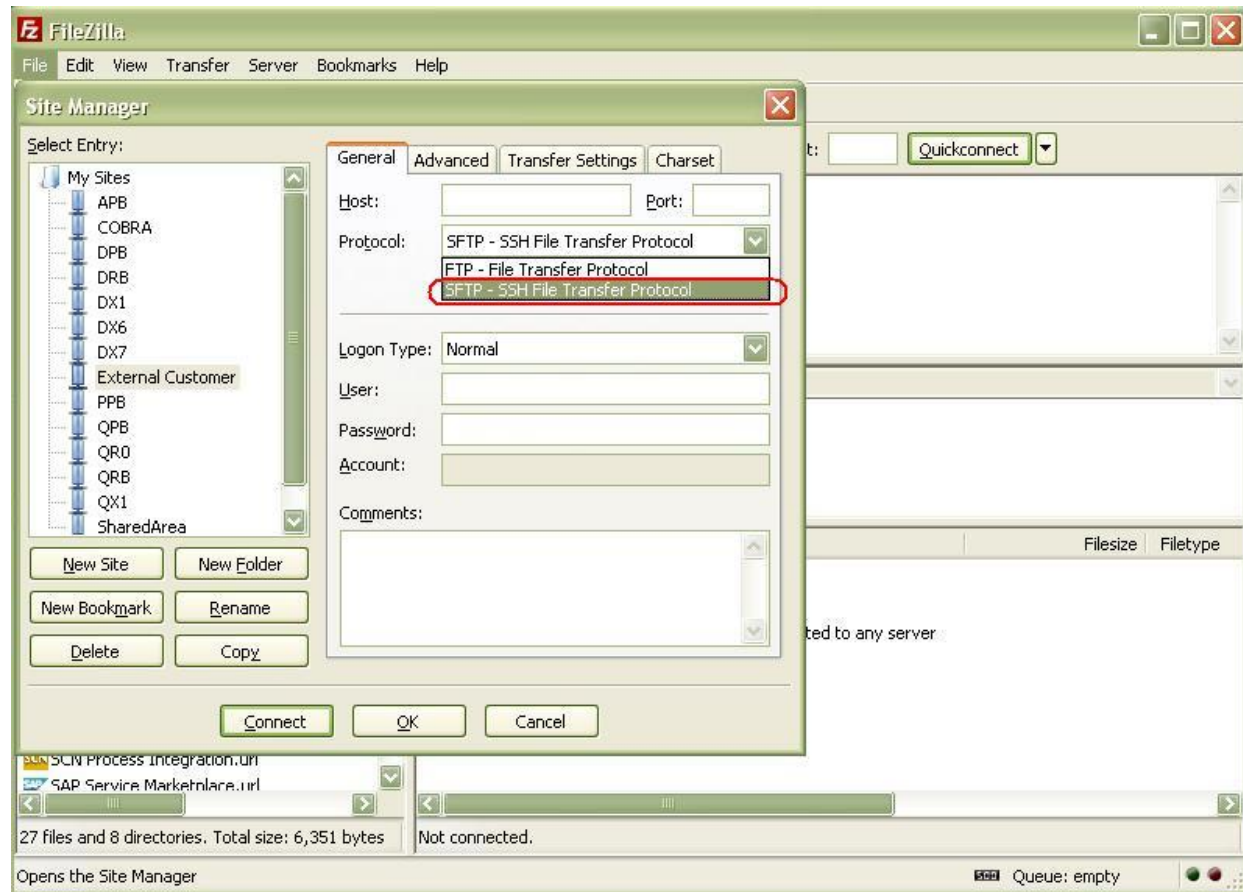
Step by Step Procedure

- *File >> Site Manager* to edit your new credentials



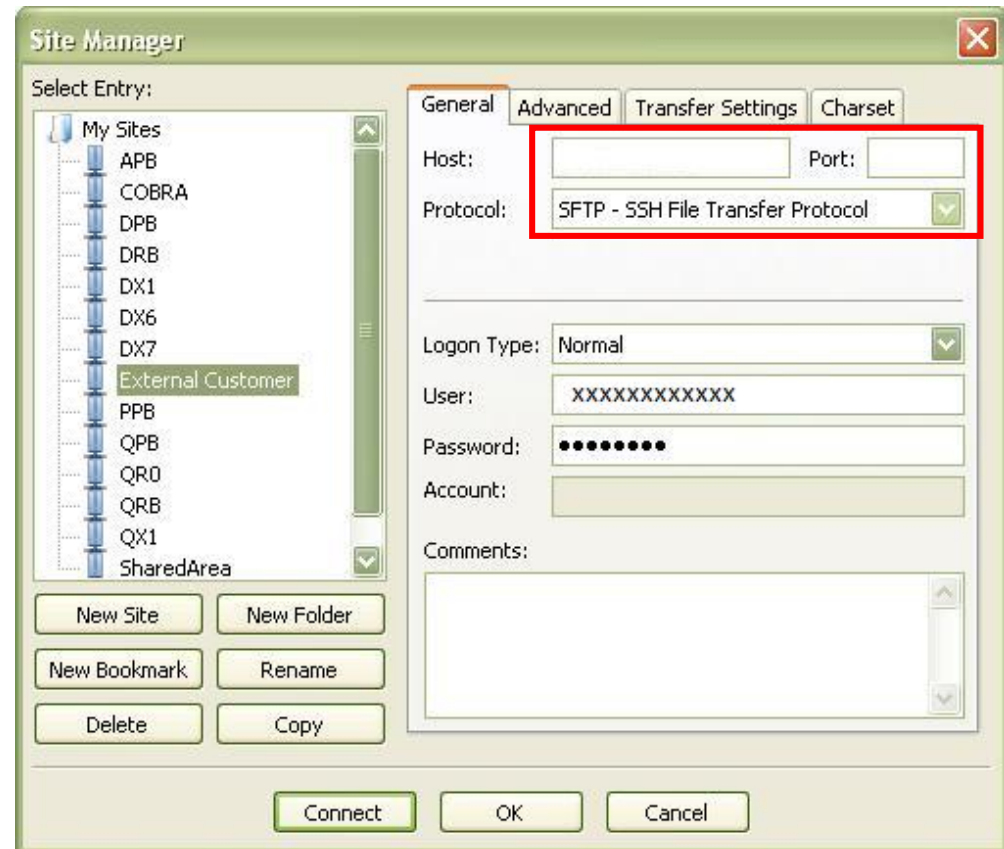
Step by Step Procedure

- Select the Protocol as **SFTP**



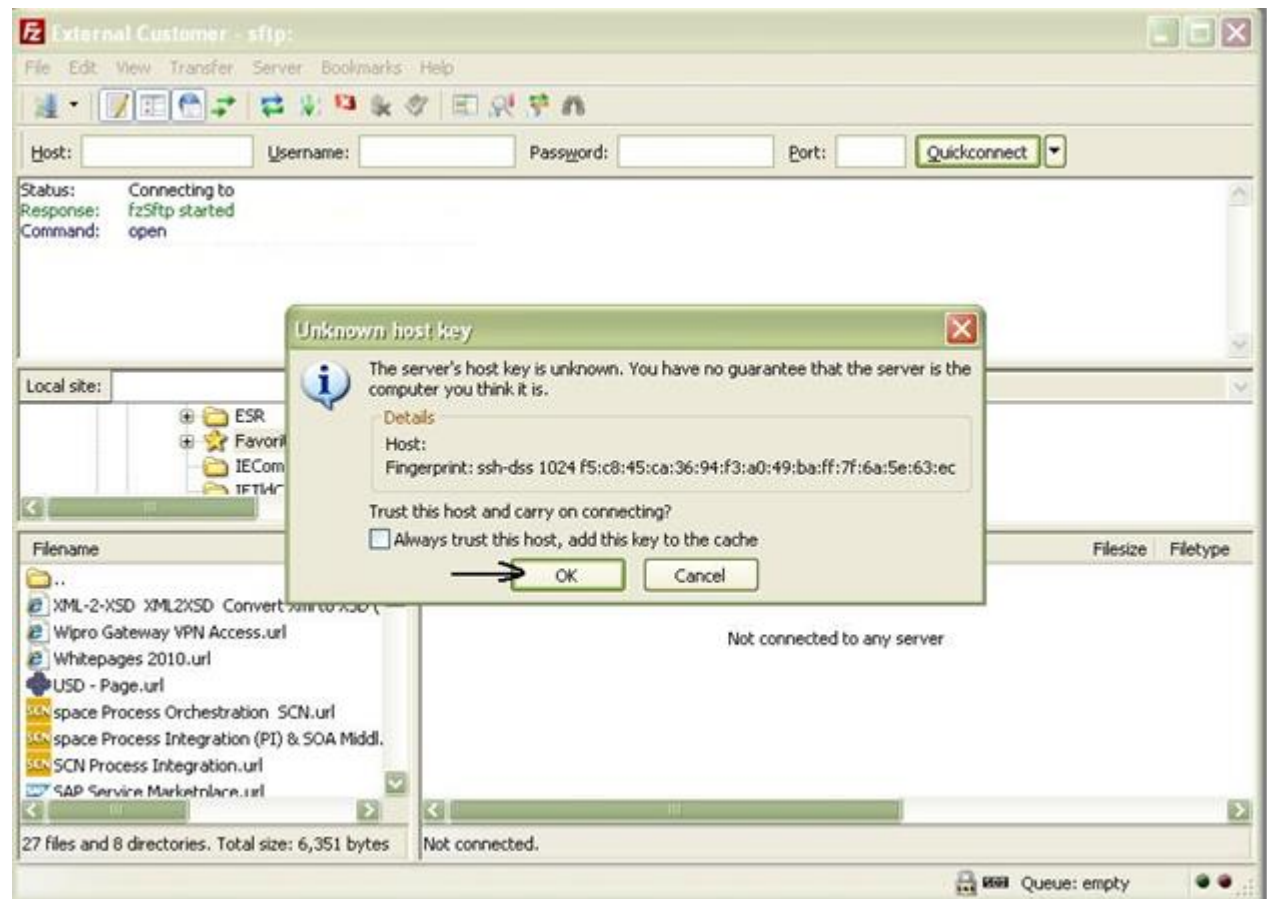
Step by Step Procedure

- Enter the hostname: **sharedservicesftp.natgrid.co.uk**
 - Username & Password
 - Click on connect
- **Reminder. We will only issue your Username & Password upon receipt of confirmation of your contact details and BSC party ID.**



Step by Step Procedure

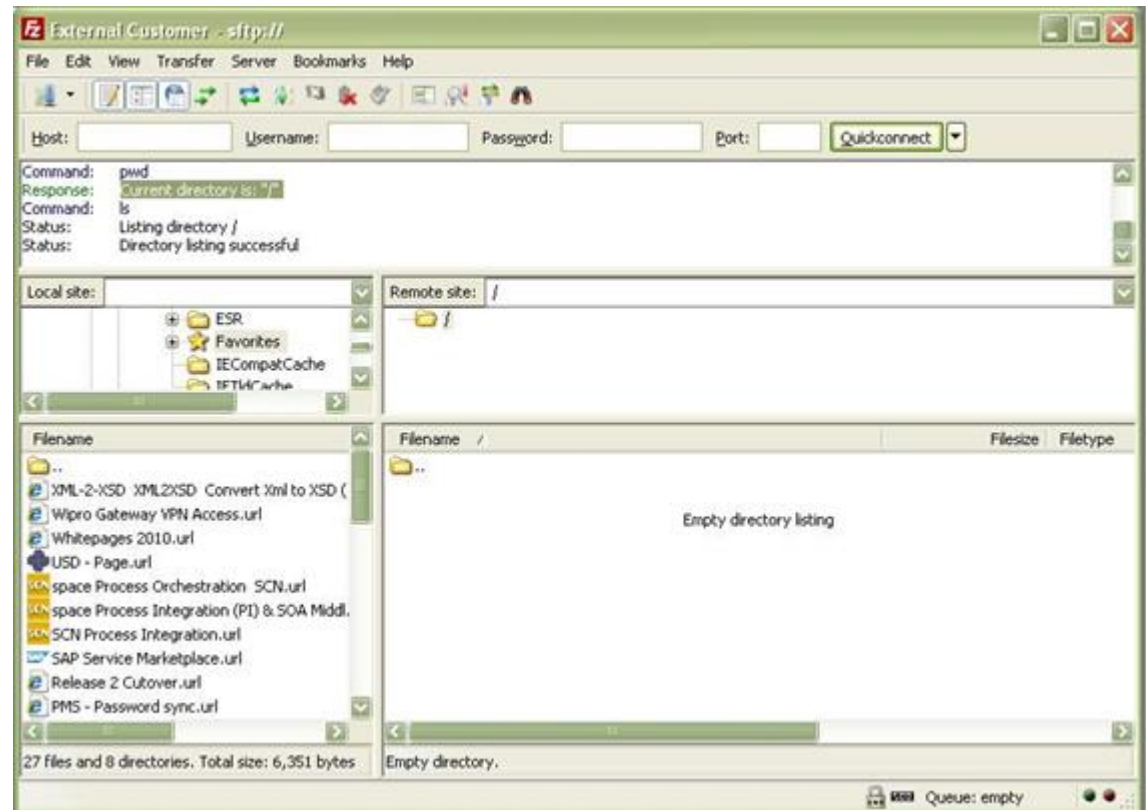
- You might get a warning when connecting for the first time, click on OK



Step by Step Procedure

- You should now be connected to your secure folder. In this folder you will find your BPA and BCR reports in the following formats:

- ***.PRT***
- ***.CSV***
- ***.PDF***
- ***.DAT***



Keeping In Touch

BSUoS.Queries@nationalgrid.com

www.nationalgrid.com/bsuos

+44 (0)1926 654 613