

**National Electricity  
Transmission System Status Report**



national**grid**ESO

National Electricity Transmission System Status Report  
Sunday 27 November 2022

Today's High Level Risk Status Forecast for the next 24h			
General Status		Voltage	
Demand		System Inertia	
System Margins		Weather	
Generation		Transmission	
Active Constraints			
<a href="#">System Warning</a>			

<a href="#">Today's Minimum De-Rated Margin</a>	7594.25 (SP 35)	
Current BMU Largest Loss Risk	Generation	1500 MW
	Demand	1150 MW

Balancing Costs

Yesterday's Market Summary

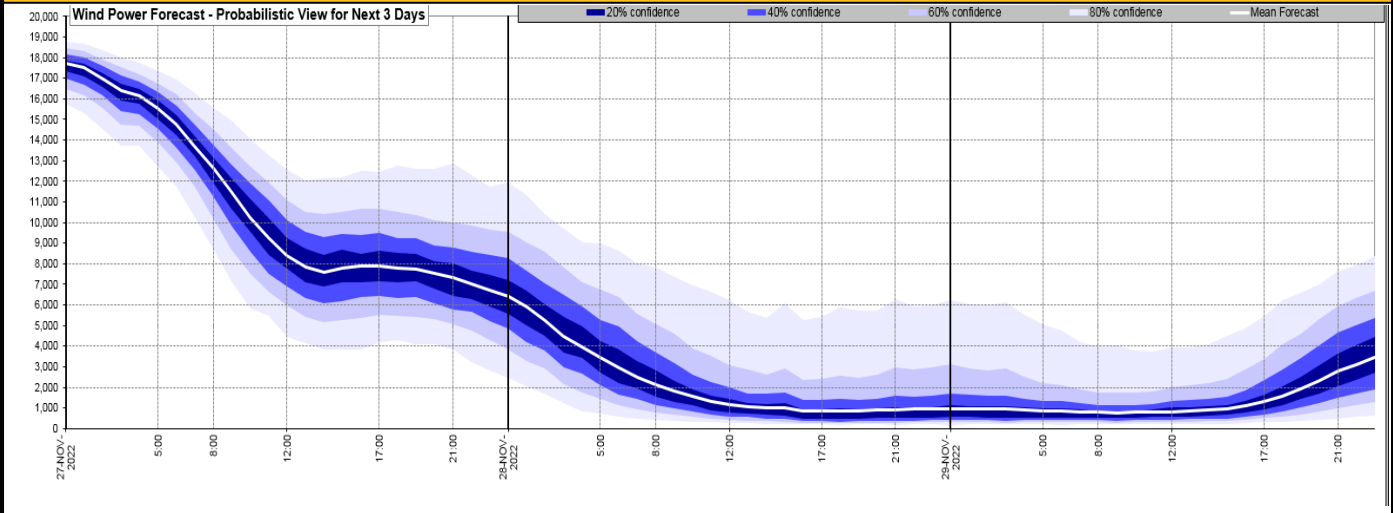
<a href="#">Cash Out Price (Max)</a>	£210 (SP 33/37)
<a href="#">Cash Out Price (Min)</a>	£0 (SP 47/48/1/4/5)
<a href="#">Peak Demand Yesterday</a>	38373 MW
Minimum Demand	18030 MW

Interconnector

Net Transfer Capacity (MWs)

Today	Import	Export	Remarks
Netherlands (BritNed)	1100	1133	Fully Available
France (IFA2)	1014	1014	Fully Available
Belgium (Nemo)	1000	1025	Fully Available
Ireland (EWIC)	500	530	Fully Available
France (ElecLink)	1014	1014	Fully Available
France (IFA)	1000	1000	Partially Available
Northern Ireland (MOYLE)	500	500	Fully Available
Norway (NSL)	1400	1400	Fully Available

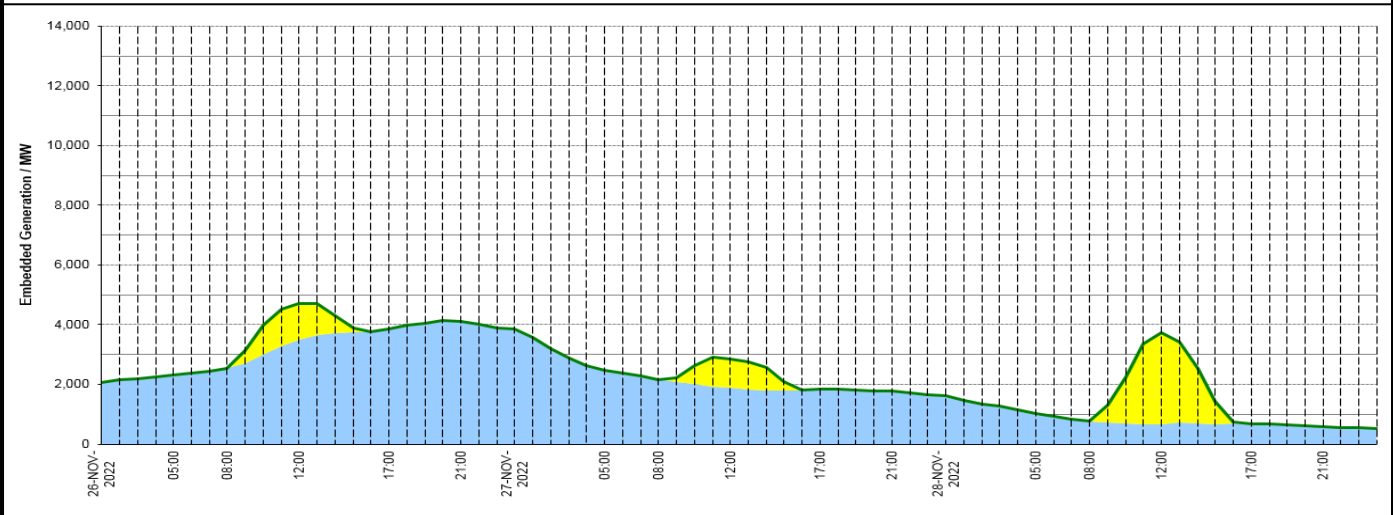
**Wind Power Forecast**



**Expected embedded generation (MWs)**

**Embedded Generation Forecast**

	26-NOV-2022					27-NOV-2022					28-NOV-2022						
	05:00	08:00	12:00	17:00	21:00	00:00	05:00	08:00	12:00	17:00	21:00	00:00	05:00	08:00	12:00	17:00	21:00
Solar (MW)	0	0	1215	0	0	0	0	0	984	0	0	0	0	32	3068	0	0
Wind (MW)	2309	2537	3484	3853	4102	3863	2488	2172	1875	1848	1769	1611	1034	745	672	676	591
STOR (MW)	0	0	0	0	0	0	0	0	0	0	0	0	0	0	0	0	0
<b>Total (MW)</b>	<b>2309</b>	<b>2537</b>	<b>4699</b>	<b>3853</b>	<b>4102</b>	<b>3863</b>	<b>2488</b>	<b>2172</b>	<b>2859</b>	<b>1848</b>	<b>1769</b>	<b>1611</b>	<b>1034</b>	<b>777</b>	<b>3740</b>	<b>676</b>	<b>591</b>



Weather	Source	Commentary
Latest forecast (Summary)	<a href="#">Met Office</a> <a href="#">SEPA</a> <a href="#">Natural Resources Wales</a>	<p><b>Today:</b> Further rain at times across southeast England, otherwise bright or sunny spells. Blustery showers across Northern Ireland and much of Scotland, and spreading to some other western areas later. Still quite windy, especially in the northwest.</p> <p><b>Tonight:</b> Cloud and rain clearing from southeast. Fog patches developing across some eastern areas, while showers continue across western parts. Patchy frost where skies clearer - most likely north and northeast.</p>
General Weather Concerns e.g. wind, rain, snow, flooding, GB Weather Warnings	<a href="#">Met Office</a> <a href="#">Weather Warnings</a> <a href="#">SEPA</a> <a href="#">Natural Resources Wales</a>	<p><b>UK Weather Warnings</b> Yellow warning of rain Areas affected: London &amp; South East England   South West England   Wales</p> <p>ACTIVEStarted at: 14:00 GMT on Sat 26 NovemberEnds: 06:00 GMT on Sun 27 November Rain, heavy at times, is likely to cause some disruption on Saturday afternoon and night</p> <p><b>Flood Warnings</b> 9 flood warnings and 73 flood alerts issued for England.</p>

Weather	Source	Commentary
		5 flood warnings and 5 flood alerts issued for Scotland.  1 flood warnings and 10 flood alerts issued for Wales.

*Contains public sector information licensed under the Open Government Licence v1.0*

Further Information	
BM Reports	<a href="https://www.bmreports.com">https://www.bmreports.com</a>
System Balancing Reports	<a href="https://www.nationalgrideso.com/balancing-data/system-balancing-reports">https://www.nationalgrideso.com/balancing-data/system-balancing-reports</a>
Forecast Volumes and Costs	<a href="https://www.nationalgrideso.com/balancing-data/forecast-volumes-and-costs">https://www.nationalgrideso.com/balancing-data/forecast-volumes-and-costs</a>
NGESO Insights	<a href="https://www.nationalgrideso.com/insights">https://www.nationalgrideso.com/insights</a>