

**National Electricity  
Transmission System Status Report**

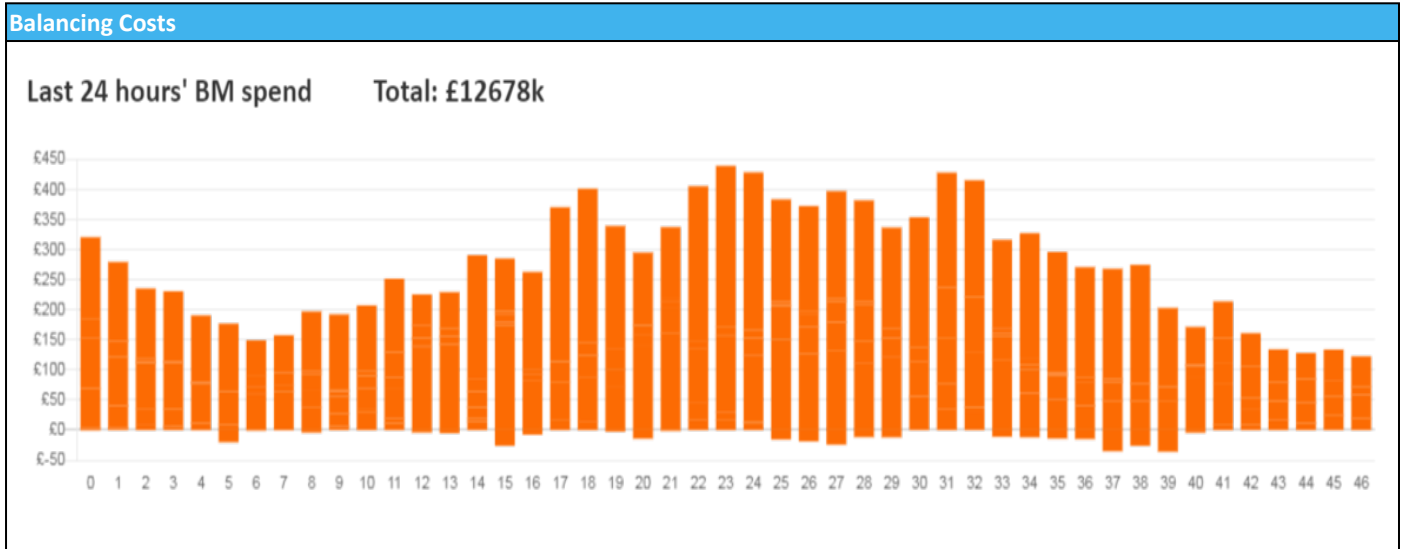


national**grid**ESO

National Electricity Transmission System Status Report  
Saturday 26 November 2022

Today's High Level Risk Status Forecast for the next 24h			
General Status		Voltage	
Demand		System Inertia	
System Margins		Weather	
Generation		Transmission	
Active Constraints			
<a href="#">System Warning</a>			

<a href="#">Today's Minimum De-Rated Margin</a>	11,938 (SP 20)	
Current BMU Largest Loss Risk	Generation	1400 MW
	Demand	1150 MW



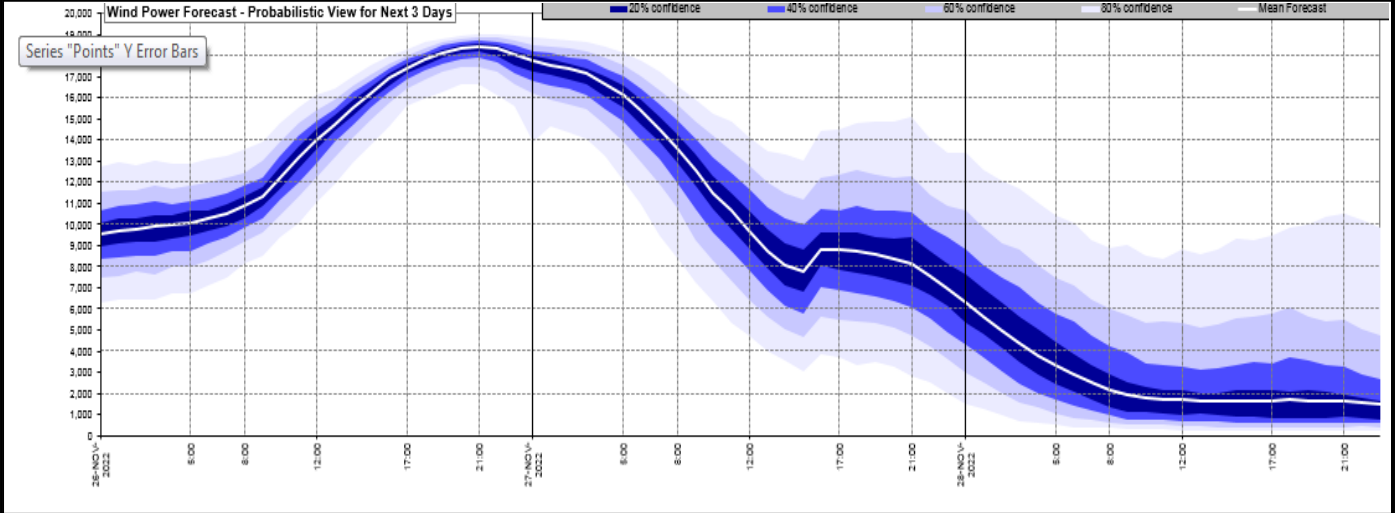
**Yesterday's Market Summary**

<a href="#">Cash Out Price (Max)</a>	£219.14 (SP 33/34)
<a href="#">Cash Out Price (Min)</a>	-£18.15 (SP 8)
<a href="#">Peak Demand Yesterday</a>	41,523 MW
Minimum Demand	19,790 MW

**Interconnector Net Transfer Capacity (MWs)**

Today	Import	Export	Remarks
Netherlands (BritNed)	1100	1133	Fully Available
France (IFA2)	1014	1014	Fully Available
Belgium (Nemo)	1000	1025	Fully Available
Ireland (EWIC)	500	530	Fully Available
France (ElecLink)	1014	1014	Fully Available
France (IFA)	1000	1000	Partially Available
Northern Ireland (MOYLE)	500	500	Fully Available
Norway (NSL)	1400	1400	Fully Available

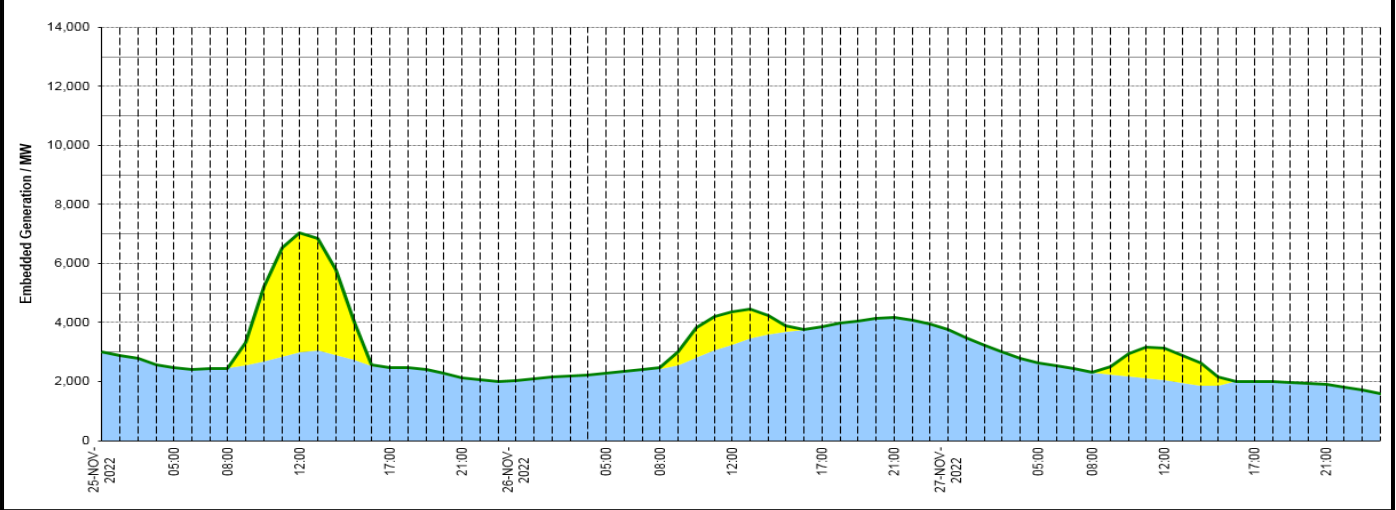
**Wind Power Forecast**



**Expected embedded generation (MWs)**

**Embedded Generation Forecast**

	25-NOV-2022					26-NOV-2022					27-NOV-2022						
	05:00	08:00	12:00	17:00	21:00	00:00	05:00	08:00	12:00	17:00	21:00	00:00	05:00	08:00	12:00	17:00	21:00
Solar (MW)	0	1	4027	0	0	0	0	32	1118	0	0	0	0	0	1069	0	0
Wind (MW)	2464	2450	3003	2479	2129	2036	2269	2434	3244	3870	4184	3756	2646	2309	2058	2010	1891
STOR (MW)	0	0	0	0	0	0	0	0	0	0	0	0	0	0	0	0	0
<b>Total (MW)</b>	<b>2464</b>	<b>2451</b>	<b>7030</b>	<b>2479</b>	<b>2129</b>	<b>2036</b>	<b>2269</b>	<b>2466</b>	<b>4362</b>	<b>3870</b>	<b>4184</b>	<b>3756</b>	<b>2646</b>	<b>2309</b>	<b>3127</b>	<b>2010</b>	<b>1891</b>



Weather	Source	Commentary
Latest forecast (Summary)	<a href="#">Met Office</a> <a href="#">SEPA</a> <a href="#">Natural Resources Wales</a>	<b>Today:</b> A dry and bright start in the east and remaining dry in the southeast, albeit with increasing cloud cover. Otherwise cloudy with outbreaks of rain, heavy in places, moving east through the day. Windy in the west, with coastal gales. <b>Tonight:</b> Rain, heavy and persistent over high ground, continuing eastwards, with showers following into northwestern areas. Mild for most and remaining windy, with coastal gales in the north and west.
General Weather Concerns e.g. wind, rain, snow, flooding, GB Weather Warnings	<a href="#">Met Office</a> <a href="#">Weather Warnings</a> <a href="#">SEPA</a> <a href="#">Natural Resources Wales</a>	<b>UK Weather Warnings</b> Yellow warning of rain Areas affected: Central, Tayside & Fife   Strathclyde Starts: 12:00 GMT on Sat 26 November Ends: 23:59 GMT on Sat 26 November Heavy rain may lead to some flooding and disruption to travel.  Yellow warning of rain Areas affected: London & South East England   South West England   Wales Starts: 14:00 GMT on Sat 26 November Ends: 03:00 GMT on Sun 27 November Rain, heavy at times, is likely to cause some disruption on Saturday afternoon and night

Weather	Source	Commentary
		<p><b>Flood Warnings</b>            4 flood warnings and 53 flood alerts issued for England.</p> <p>0 flood warnings and 5 flood alerts issued for Scotland.</p> <p>0 flood warnings and 4 flood alerts issued for Wales.</p>

*Contains public sector information licensed under the Open Government Licence v1.0*

Further Information	
BM Reports	<a href="https://www.bmreports.com">https://www.bmreports.com</a>
System Balancing Reports	<a href="https://www.nationalgrideso.com/balancing-data/system-balancing-reports">https://www.nationalgrideso.com/balancing-data/system-balancing-reports</a>
Forecast Volumes and Costs	<a href="https://www.nationalgrideso.com/balancing-data/forecast-volumes-and-costs">https://www.nationalgrideso.com/balancing-data/forecast-volumes-and-costs</a>
NGESO Insights	<a href="https://www.nationalgrideso.com/insights">https://www.nationalgrideso.com/insights</a>