

**National Electricity  
Transmission System Status Report**

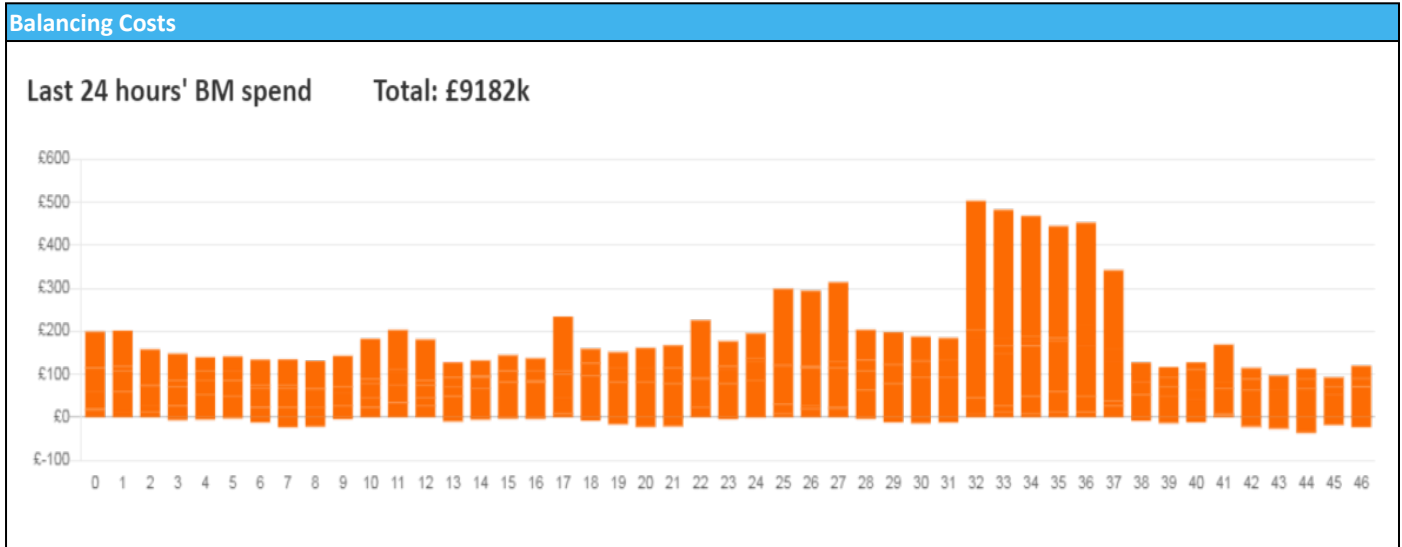


national**grid**ESO

National Electricity Transmission System Status Report  
Saturday 19 November 2022

Today's High Level Risk Status Forecast for the next 24h			
General Status		Voltage	
Demand		System Inertia	
System Margins		Weather	
Generation		Transmission	
Active Constraints			
<a href="#">System Warning</a>			

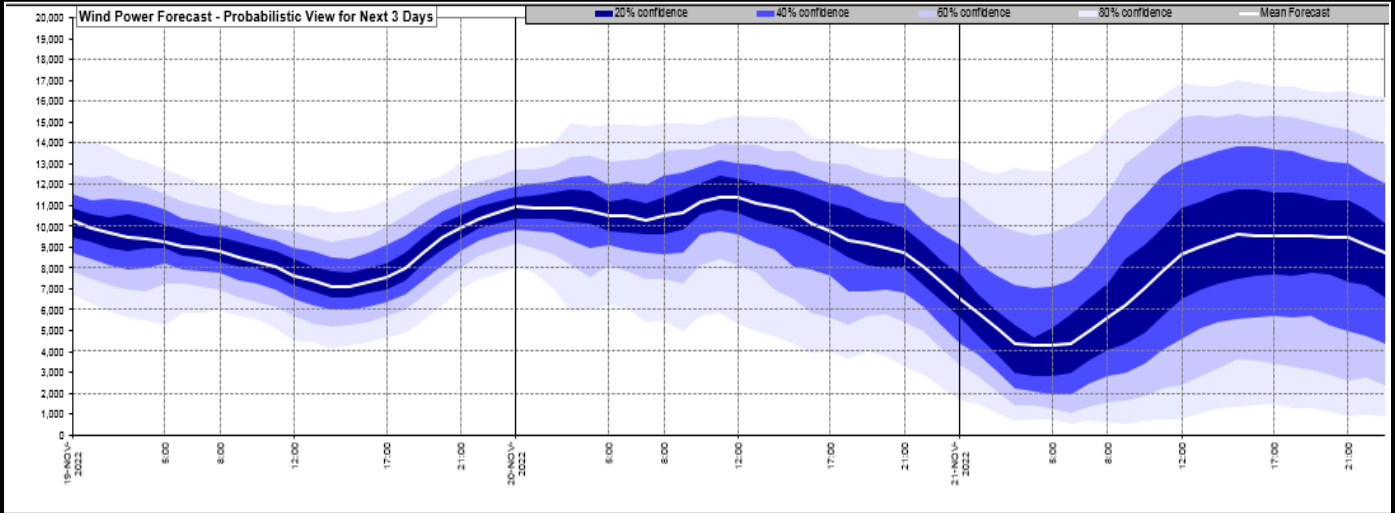
<a href="#">Today's Minimum De-Rated Margin</a>	6599 (SP 36)	
Current BMU Largest Loss Risk	Generation	1500 MW
	Demand	1050 MW



Yesterday's Market Summary	
<a href="#">Cash Out Price (Max)</a>	£263.62 (SP 34-36)
<a href="#">Cash Out Price (Min)</a>	£50.00 (SP 41-42 & 45)
<a href="#">Peak Demand Yesterday</a>	39,425 MW
Minimum Demand	18,950 MW

Interconnector Net Transfer Capacity (MWs)			
Today	Import	Export	Remarks
Netherlands (BritNed)	1100	1133	Fully Available
France (IFA2)	1014	1014	Fully Available
Belgium (Nemo)	1000	1025	Fully Available
Ireland (EWIC)	500	530	Fully Available
France (ElecLink)	1014	1014	Fully Available
France (IFA)	1000	1000	Partially Available
Northern Ireland (MOYLE)	500	500	Fully Available
Norway (NSL)	1400	1400	Fully Available

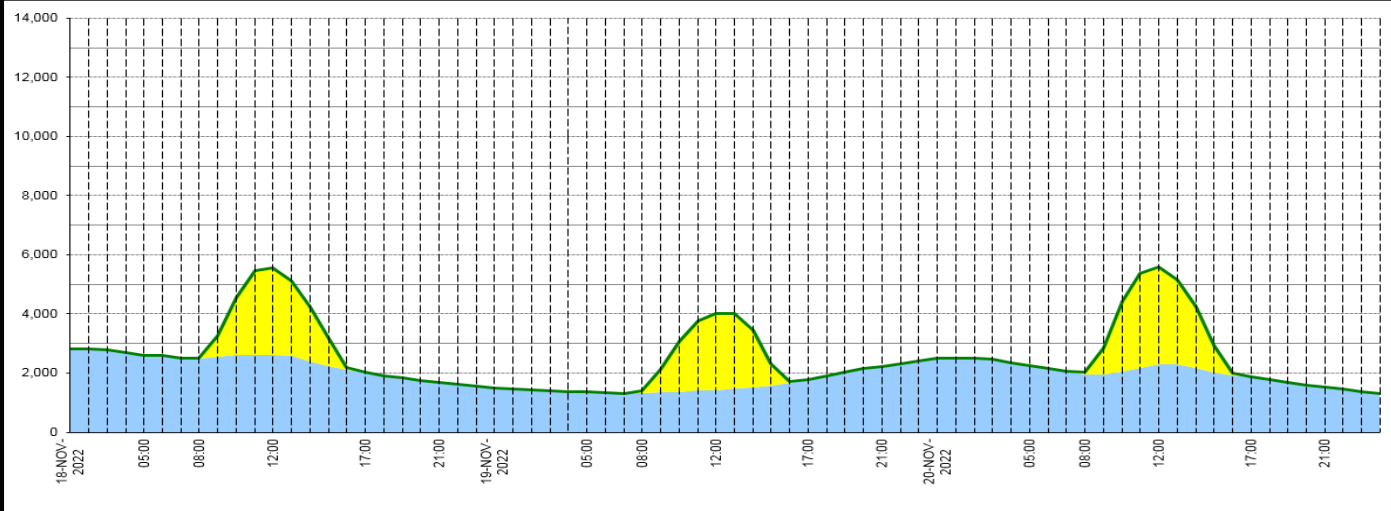
**Wind Power Forecast**



**Expected wind embedded generation (MWs)**

**Embedded Generation Forecast**

	18-NOV-2022					19-NOV-2022					20-NOV-2022						
	05:00	08:00	12:00	17:00	21:00	00:00	05:00	08:00	12:00	17:00	21:00	00:00	05:00	08:00	12:00	17:00	21:00
Solar (MW)	0	11	2945	0	0	0	0	95	2583	0	0	0	0	90	3296	0	0
Wind (MW)	2613	2489	2605	2021	1694	1486	1357	1317	1427	1785	2234	2512	2251	1949	2286	1863	1527
STOR (MW)	0	0	0	0	0	0	0	0	0	0	0	0	0	0	0	0	0
<b>Total (MW)</b>	<b>2613</b>	<b>2500</b>	<b>5550</b>	<b>2021</b>	<b>1694</b>	<b>1486</b>	<b>1357</b>	<b>1412</b>	<b>4010</b>	<b>1785</b>	<b>2234</b>	<b>2512</b>	<b>2251</b>	<b>2039</b>	<b>5582</b>	<b>1863</b>	<b>1527</b>



Weather	Source	Commentary
Latest forecast (Summary)	<a href="#">Met Office</a> <a href="#">SEPA</a> <a href="#">Natural Resources Wales</a>	<p><b>Today:</b> A cold but bright start in the west with isolated fog clearing. Sunny spells here being replaced by increasing cloud, rain and wind in the far west later. Cloudy with outbreaks of light rain and drizzle in the east.</p> <p><b>Tonight:</b> Band of cloud and rain, accompanied by coastal gales in the north, moving east with scattered blustery showers following later. Chilly evening in the southeast under briefly clearer skies.</p>
General Weather Concerns e.g. wind, rain, snow, flooding, GB Weather Warnings	<a href="#">Met Office</a> <a href="#">Weather Warnings</a> <a href="#">SEPA</a> <a href="#">Natural Resources Wales</a>	<p><b>UK Weather Warnings</b> No weather warnings are in force for the UK</p> <p><b>Flood Warnings</b> 7 flood warnings and 56 flood alerts issued for England.</p> <p>7 severe flood warnings, 30 flood warnings and 9 flood alerts issued for Scotland.</p> <p>0 flood warnings and 2 flood alerts issued for Wales.</p>

Contains public sector information licensed under the Open Government Licence v1.0

Further Information	
BM Reports	<a href="https://www.bmreports.com">https://www.bmreports.com</a>
System Balancing Reports	<a href="https://www.nationalgrideso.com/balancing-data/system-balancing-reports">https://www.nationalgrideso.com/balancing-data/system-balancing-reports</a>
Forecast Volumes and Costs	<a href="https://www.nationalgrideso.com/balancing-data/forecast-volumes-and-costs">https://www.nationalgrideso.com/balancing-data/forecast-volumes-and-costs</a>
NGESO Insights	<a href="https://www.nationalgrideso.com/insights">https://www.nationalgrideso.com/insights</a>