

# National Electricity Transmission System Status Report

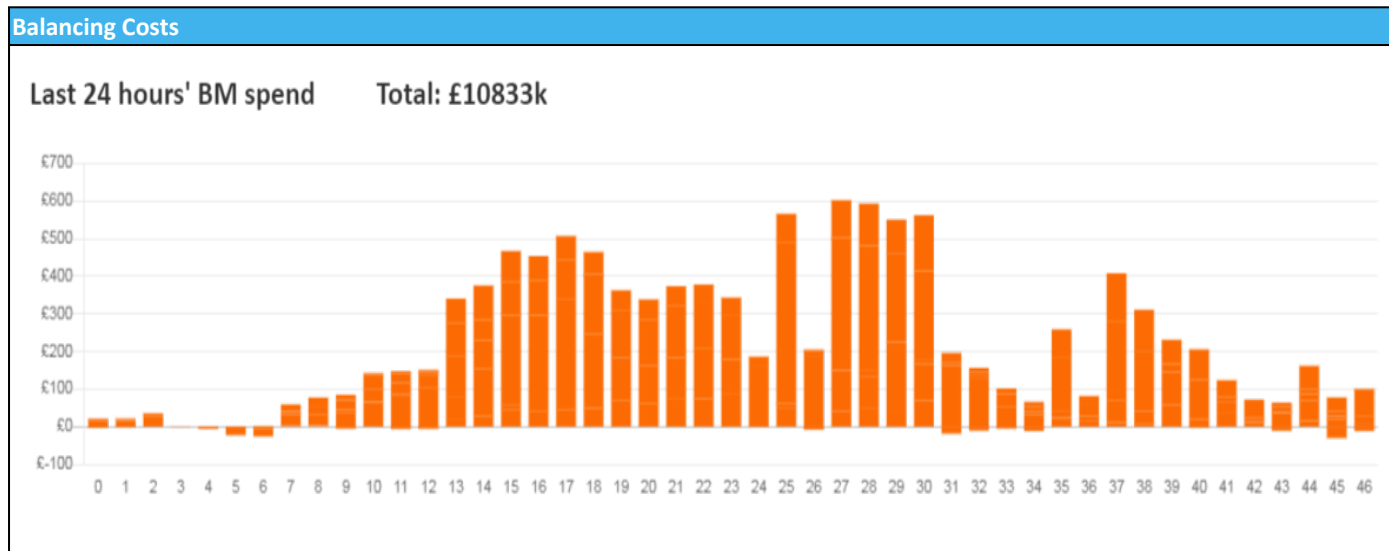


nationalgridESO

National Electricity Transmission System Status Report  
Thursday 17 November 2022

Today's High Level Risk Status Forecast for the next 24h			
General Status		Voltage	
Demand		System Inertia	
System Margins		Weather	
Generation		Transmission	
Active Constraints			
<a href="#">System Warning</a>			

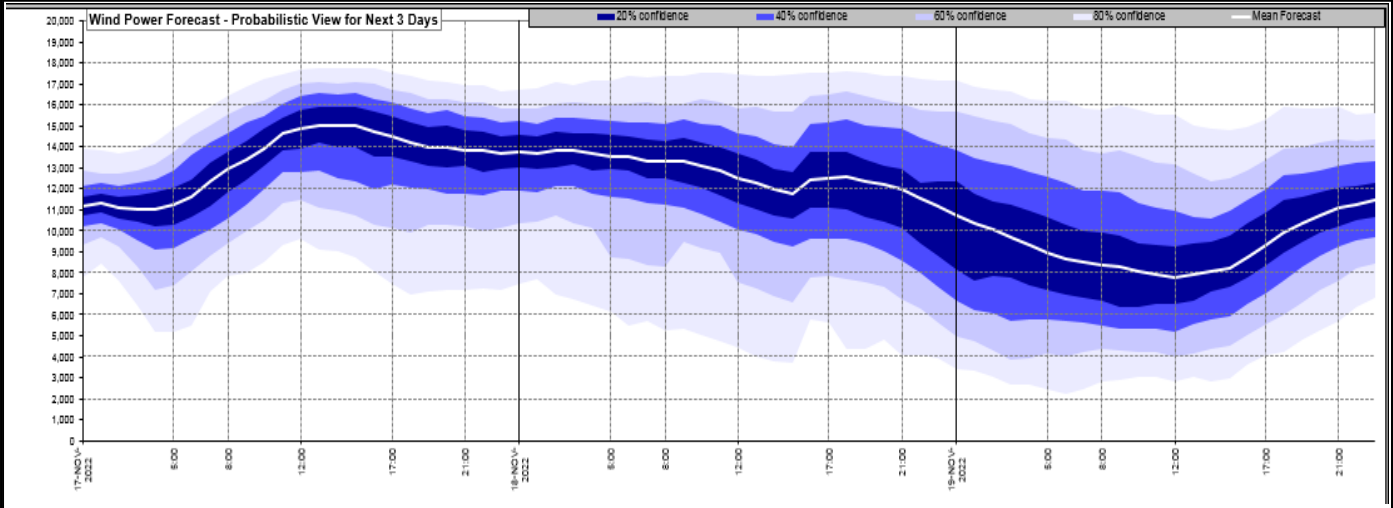
<a href="#">Today's Minimum De-Rated Margin</a>	10638.66 (SP 35)	
Current BMU Largest Loss Risk	Generation	1500 MW
	Demand	850 MW



Yesterday's Market Summary	
<a href="#">Cash Out Price (Max)</a>	£295.04 (SP 31)
<a href="#">Cash Out Price (Min)</a>	−£5.83 (SP 7)
<a href="#">Peak Demand Yesterday</a>	40, 078 MW
Minimum Demand	19, 670 MW

Interconnector Net Transfer Capacity (MWs)			
Today	Import	Export	Remarks
Netherlands (BritNed)	1100	1133	Fully Available
France (IFA2)	1014	1014	Fully Available
Belgium (Nemo)	1000	1025	Fully Available
Ireland (EWIC)	500	530	Fully Available
France (ElecLink)	1014	1014	Fully Available
France (IFA)	1000	1000	Partially Available
Northern Ireland (MOYLE)	500	500	Fully Available
Norway (NSL)	1400	1400	Fully Available

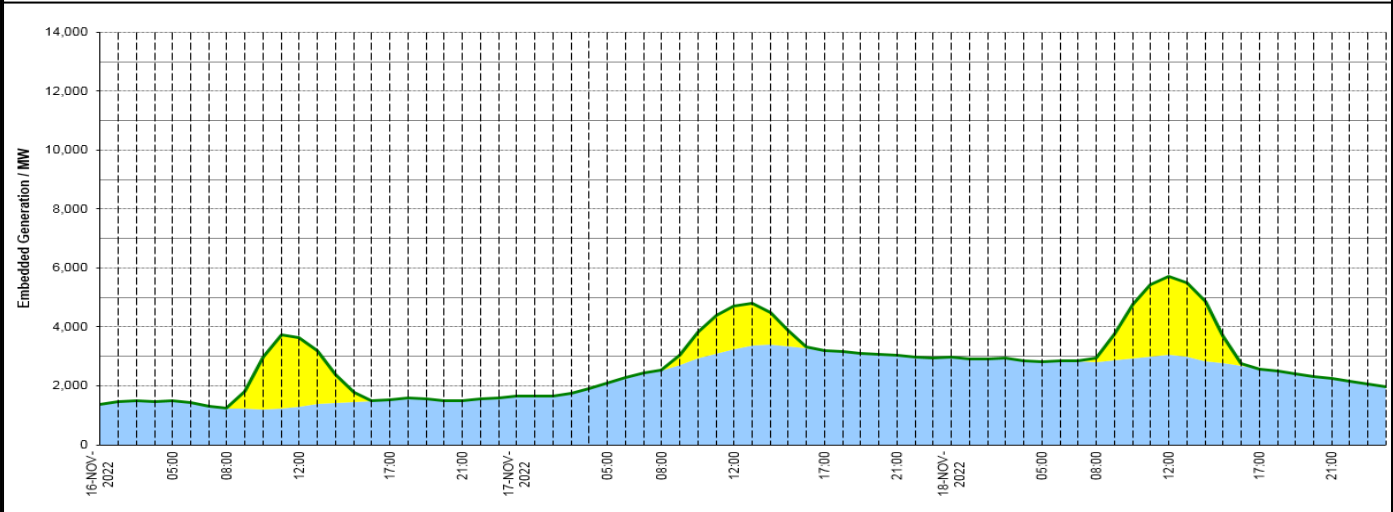
### Wind Power Forecast



### Expected embedded generation (MWs)

#### Embedded Generation Forecast

	16-NOV-2022					17-NOV-2022					18-NOV-2022						
	05:00	08:00	12:00	17:00	21:00	00:00	05:00	08:00	12:00	17:00	21:00	00:00	05:00	08:00	12:00	17:00	21:00
Solar (MW)	0	11	2349	0	0	0	0	36	1479	0	0	0	0	133	2655	0	0
Wind (MW)	1492	1227	1286	1537	1501	1650	2084	2509	3234	3195	3044	2961	2828	2798	3066	2583	2242
STOR (MW)	0	0	0	0	0	0	0	0	0	0	0	0	0	0	0	0	0
<b>Total (MW)</b>	<b>1492</b>	<b>1238</b>	<b>3635</b>	<b>1537</b>	<b>1501</b>	<b>1650</b>	<b>2084</b>	<b>2545</b>	<b>4713</b>	<b>3195</b>	<b>3044</b>	<b>2961</b>	<b>2828</b>	<b>2931</b>	<b>5721</b>	<b>2583</b>	<b>2242</b>



Weather	Source	Commentary
Latest forecast (Summary)	<a href="#">Met Office</a> <a href="#">SEPA</a> <a href="#">Natural Resources Wales</a>	<p><b>Today:</b> Persistent rain affecting many central, northern and eastern areas, heaviest across parts of northeast England, with possible flooding. Some western and southern parts brighter after early fog and frost in Northern Ireland, but scattered showers in southwest. Windy, feeling cool.</p> <p><b>Tonight:</b> Rain continues across some northern and northeastern areas, heavy and persistent in places, especially across hills in eastern Scotland. Clearer in parts of south and west. Windy for many.</p>
General Weather Concerns e.g. wind, rain, snow, flooding, GB Weather Warnings	<a href="#">Met Office</a> <a href="#">Weather Warnings</a> <a href="#">SEPA</a> <a href="#">Natural Resources Wales</a>	<p><b>UK Weather Warnings</b> Yellow warning of rain Areas affected: London &amp; South East England ACTIVE Started at: 17:00 GMT on Wed 16 November Ends: 06:00 GMT on Thu 17 November Heavy rain and showers bringing a chance of some flooding and disruption.</p> <p>Yellow warning of rain Areas affected: East Midlands   North East England   North West England   Wales   West Midlands   Yorkshire &amp; Humber ACTIVE Started at: 00:00 GMT on Thu 17 November Ends: 23:59 GMT on Thu 17 November</p>

Weather	Source	Commentary
		<p>Heavy rain leading to a small chance of flooding and disruption.</p> <p>Yellow warning of rain Areas affected: Central, Tayside &amp; Fife   Grampian   North East England   SW Scotland, Lothian Borders Starts: 15:00 GMT on Thu 17 November Ends: 18:00 GMT on Fri 18 November A spell of persistent, and at times heavy rainfall will develop during Thursday, continuing on Friday, leading to a risk of flooding.</p>
		<p><b>Flood Warnings</b> 24 flood warning and 97 flood alerts issued for England.</p> <p>8 flood warnings and 3 flood alerts issued for Scotland.</p> <p>0 flood warnings and 0 flood alerts issued for Wales.</p>

*Contains public sector information licensed under the Open Government Licence v1.0*

Further Information	
BM Reports	<a href="https://www.bmreports.com">https://www.bmreports.com</a>
System Balancing Reports	<a href="https://www.nationalgrideso.com/balancing-data/system-balancing-reports">https://www.nationalgrideso.com/balancing-data/system-balancing-reports</a>
Forecast Volumes and Costs	<a href="https://www.nationalgrideso.com/balancing-data/forecast-volumes-and-costs">https://www.nationalgrideso.com/balancing-data/forecast-volumes-and-costs</a>
NGESO Insights	<a href="https://www.nationalgrideso.com/insights">https://www.nationalgrideso.com/insights</a>