

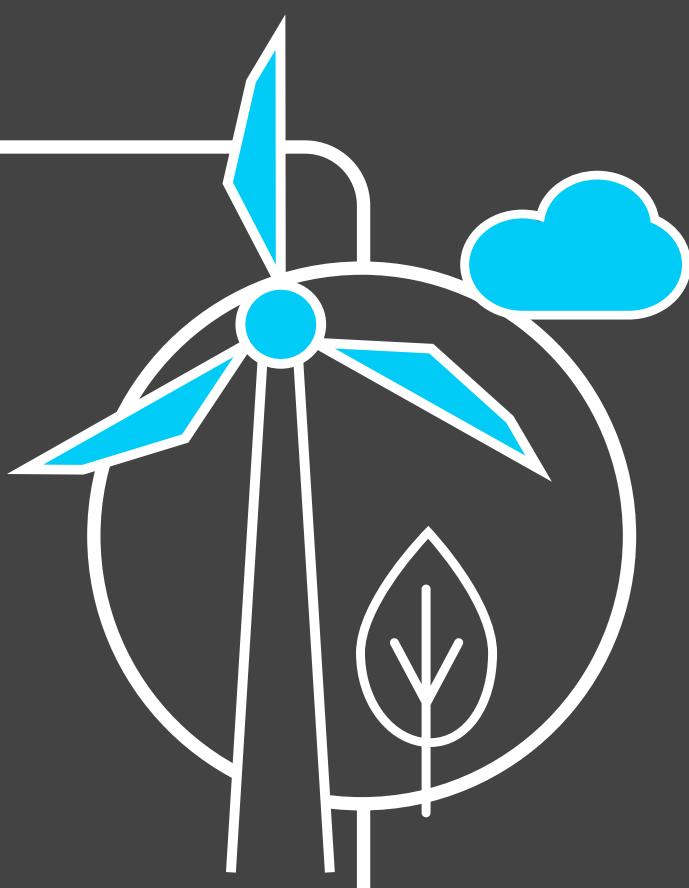
Britain's Electricity Explained: November 2021

nationalgridESO



Gas	36.4%
Wind	27%
Nuclear	15.8%
Biomass	6.6%
Coal	2.1%
Solar	1.6%
Imports	7.4%
Hydro	2.5%
Storage	0.6%

Zero carbon



48% of electricity came from zero carbon sources
82.3% peak zero carbon share

Carbon intensity



182 gCO₂/kWh average  Greenest time of the month
05.30am on 1st November

Coal

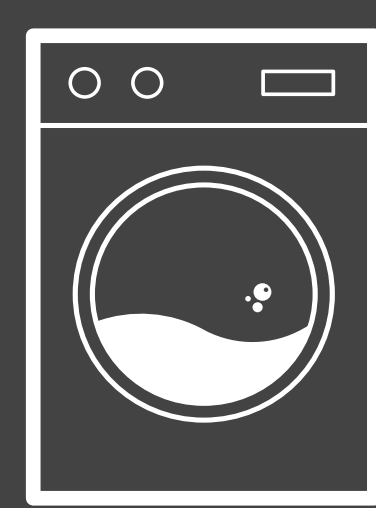


2.1% use this month
This time **5 years ago** coal usage was **11.2%**

Imports & exports



Demand



25 TWh run through network (that's 25 billion washing machine cycles).
Peak demand time was 5.00pm on 29th November.

View in real-time



To view our data in real-time, please download the ESO app for Apple or Android.
Or visit carbonintensity.org.uk