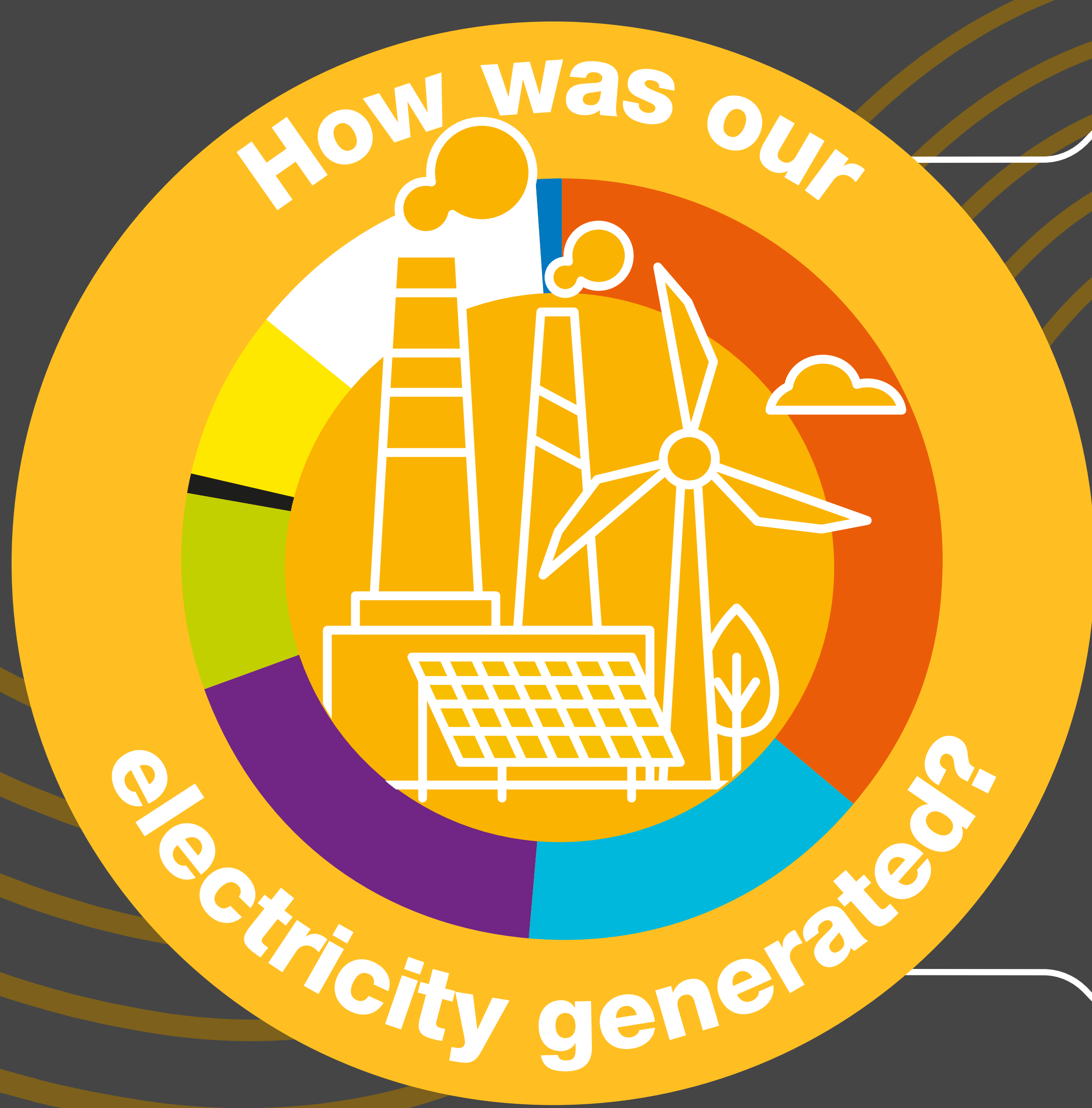


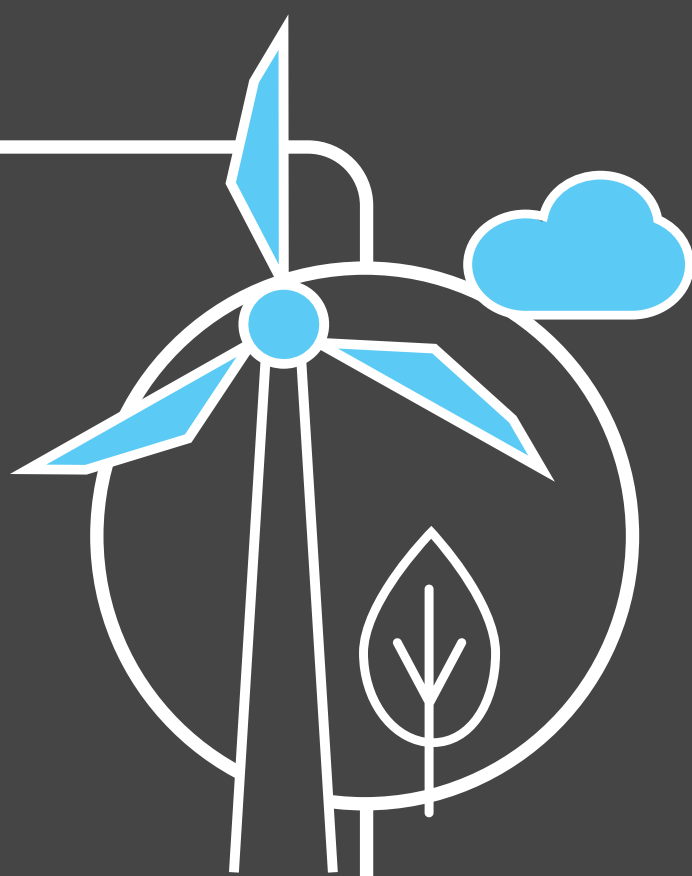
# Britain's Electricity Explained: July 2021

nationalgridESO



Gas	41%
Wind	11%
Nuclear	15%
Biomass	7%
Coal	2%
Solar	7%
Imports	15%
Hydro	1%

## Zero carbon



**34%** of electricity came from zero carbon sources  
**69.7%** peak zero carbon share

## Carbon intensity



**207** gCO<sub>2</sub>/kWh average



Greenest time of the month  
 2.00am on 29th July

## Coal



**2%** use this month

This time **5 years ago** coal usage was **19%**

## Imports & exports

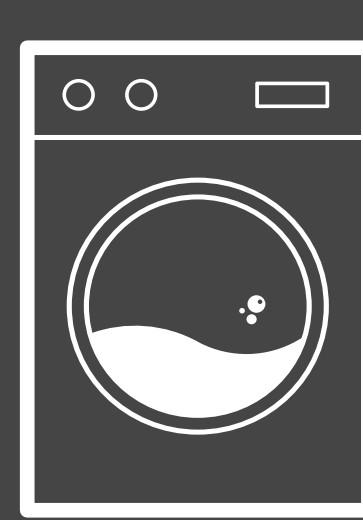


Energy in  
**6367**  
**GWh**



Energy out  
**482**  
**GWh**

## Demand



**21 TWh** run through network  
 (that's 20 billion washing machine cycles).  
 Peak demand time was 4.30pm  
 on 5th July.

## View in real-time



To view our data in real-time, please  
 download the ESO app for Apple or Android.  
 Or visit [carbonintensity.org.uk](https://carbonintensity.org.uk)