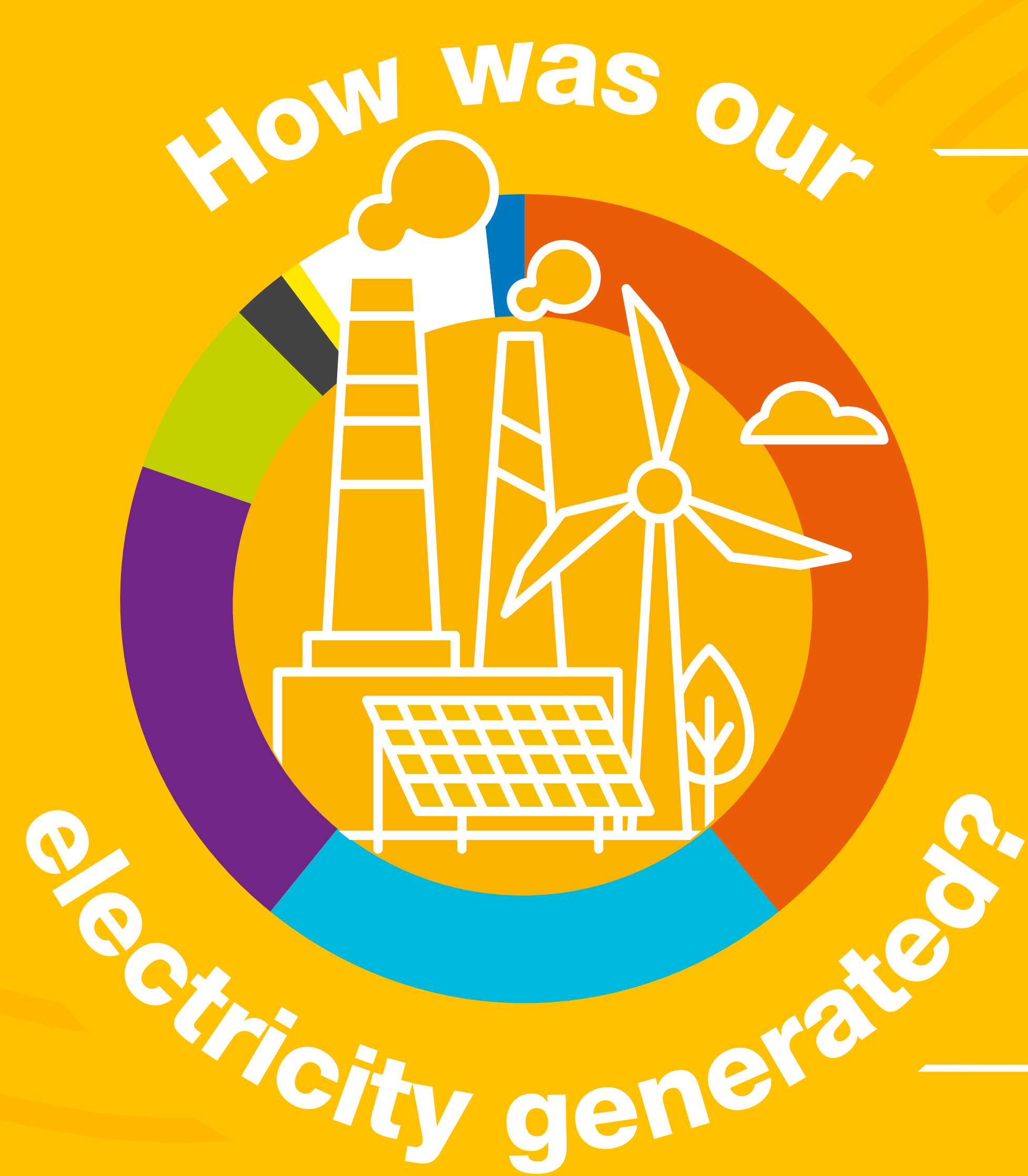


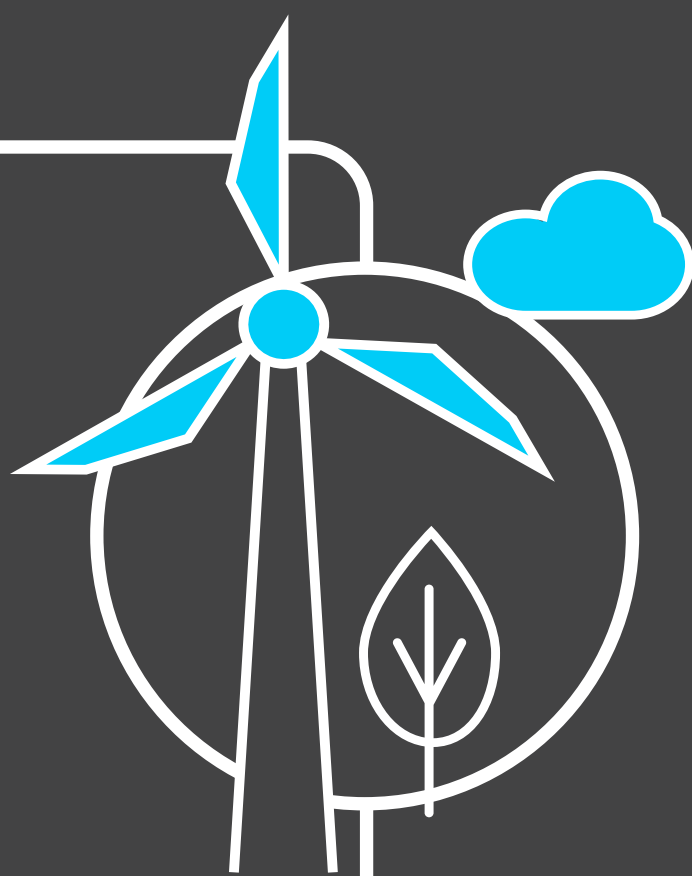
Britain's Electricity Explained: December 2020

nationalgridESO



Gas	39.28%
Wind	21.77%
Nuclear	19.26%
Biomass	7.26%
Coal	2.33%
Solar	0.67%
Imports	7.86%
Hydro	1.57%

Zero carbon



43% of electricity came from zero carbon sources
80.09% peak zero carbon share

Carbon intensity



185 gCO₂/kWh average



Greenest time of the month
 6am on 21st December

Coal



2.33% use this month

This time **5 years ago** coal usage was **2.91%**

Imports & exports



Energy in
3804.92 GWh



Energy out
534.61 GWh

Demand



40000 MW run through network (that's 8797 billion kettles all on at once).
 Peak demand time was 5.30pm on 4th December.

View in real-time



To view our data in real-time, please download the ESO app for Apple or Android. Or visit carbonintensity.org.uk