

Date:

Monday 13 Nov 2023

BSUoS Final Tariff: £14.04/MWh

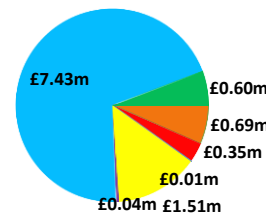
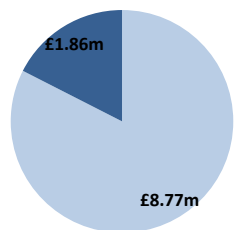
Total Outturn: £10.63m

Daily Balancing Costs

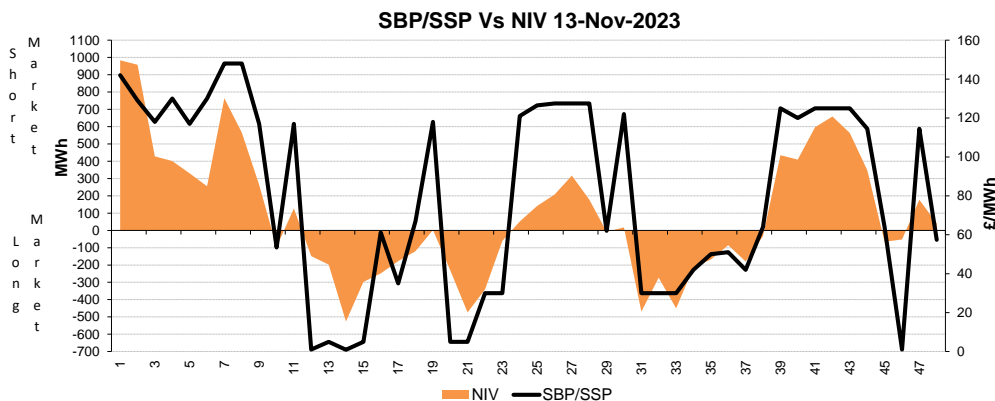
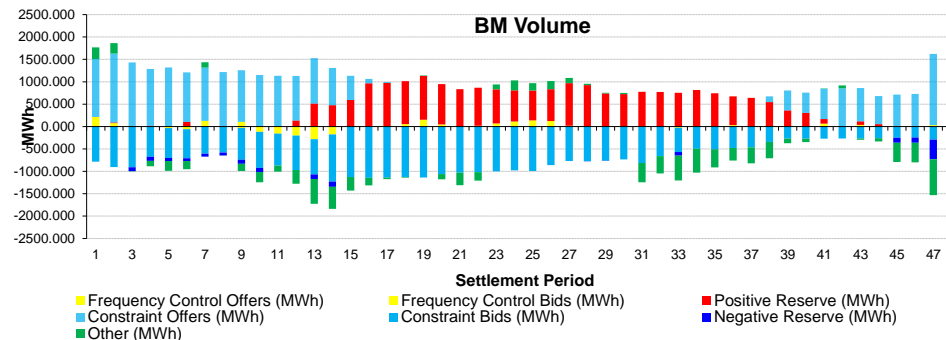
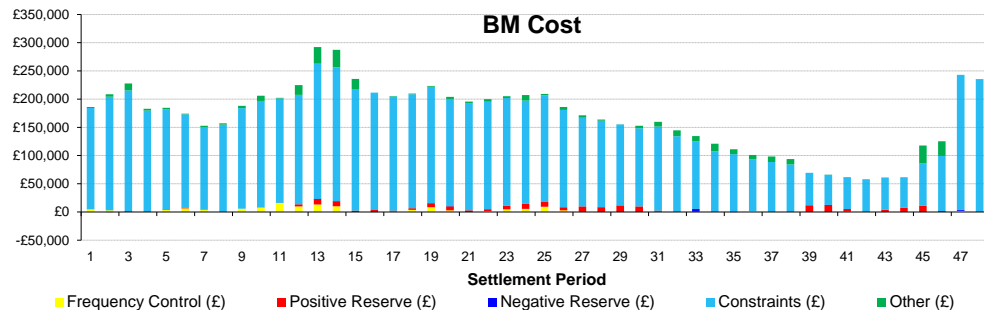


BM Cost (Indicative)

AS Cost (Estimate)



- Energy Imbalance
- Positive Reserve (Op Res + STOR)
- Negative Reserve (Footroom)
- Frequency Control (Response + Fast Reserve)
- Other Reserve (Ancillary Costs Only)
- Constraints (BM & Trades only)
- Other (Reactive + Black Start + BM & AS General)



Commentary

The market was alternating between long and short throughout the day. Trades were required for Margin. BM Actions managed thermal export constraints in Scotland throughout the day. Trades and BM Actions supported voltage control. BM Actions supported Inertia.