

# National Electricity Transmission System Status Report



national**grid**ESO

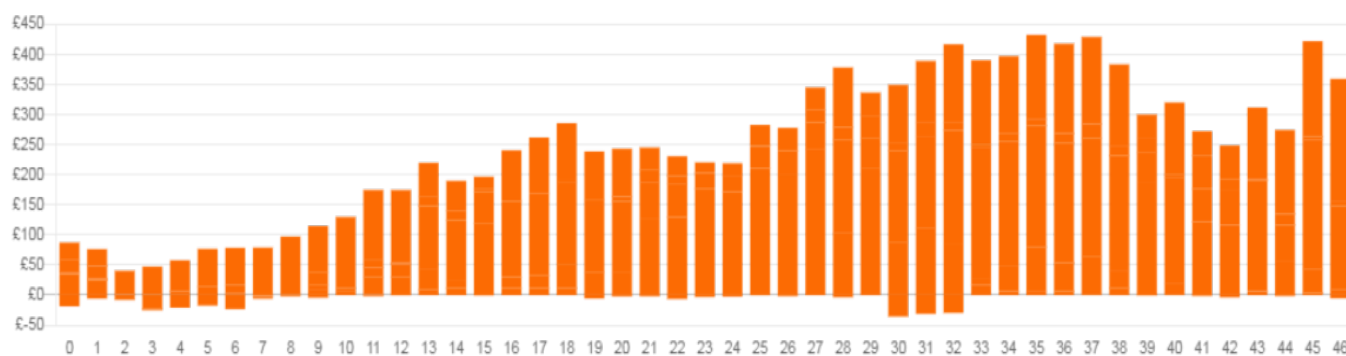
**National Electricity Transmission System Status Report**  
**Monday 30 January 2023**

Today's High Level Risk Status Forecast for the next 24h			
General Status		Voltage	
Demand		System Inertia	
System Margins		Weather	
Generation		Transmission	
Active Constraints			
<a href="#">System Warning</a>			

<a href="#">Today's Minimum De-Rated Margin</a>	4281 (SP 36)	
Current BMU Largest Loss Risk	Generation	1400 MW
	Demand	560 MW

**Balancing Costs**

Last 24 hours' BM spend      Total: £11500k



**Yesterday's Market Summary**

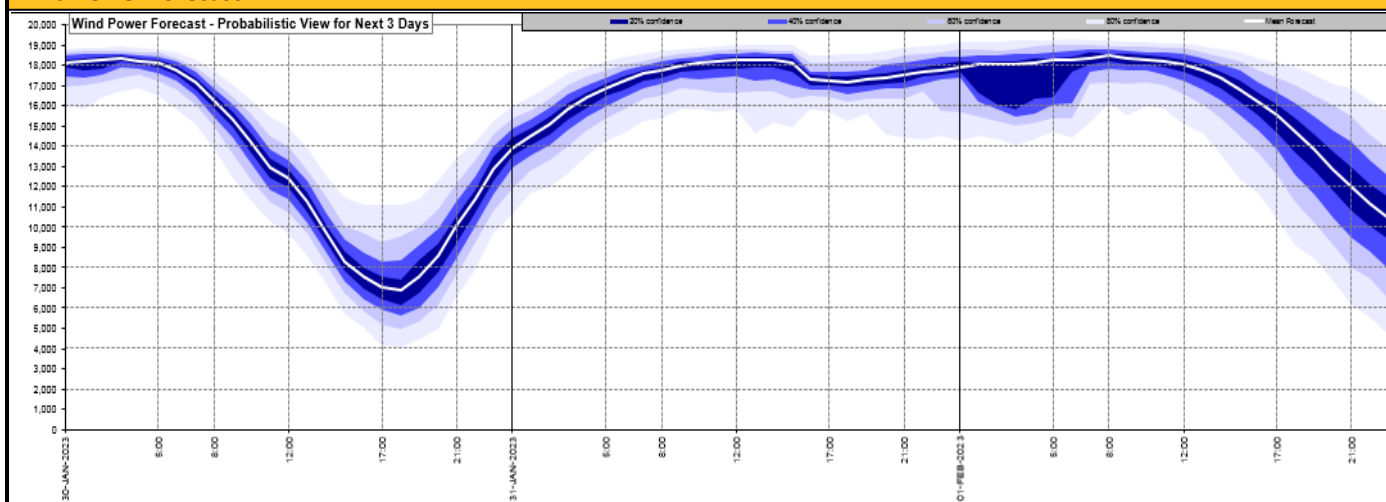
<a href="#">Cash Out Price (Max)</a>	£18.00 (SP 37)
<a href="#">Cash Out Price (Min)</a>	£0.00 (SP 12, 28 & 29)
<a href="#">Peak Demand Yesterday</a>	37,120 MW
Minimum Demand	19,900 MW

**Interconnector**

**Net Transfer Capacity (MWs)**

Today	Import	Export	Remarks
Netherlands (BritNed)	1100	1133	Fully Available
France (IFA2)	1014	1014	Fully Available
Belgium (Nemo)	1000	1025	Fully Available
Ireland (EWIC)	500	530	Fully Available
France (ElecLink)	1014	1014	Fully Available
France (IFA)	2000	2000	Fully available
Northern Ireland (MOYLE)	500	500	Fully Available
Norway (NSL)	1400	1400	Fully Available

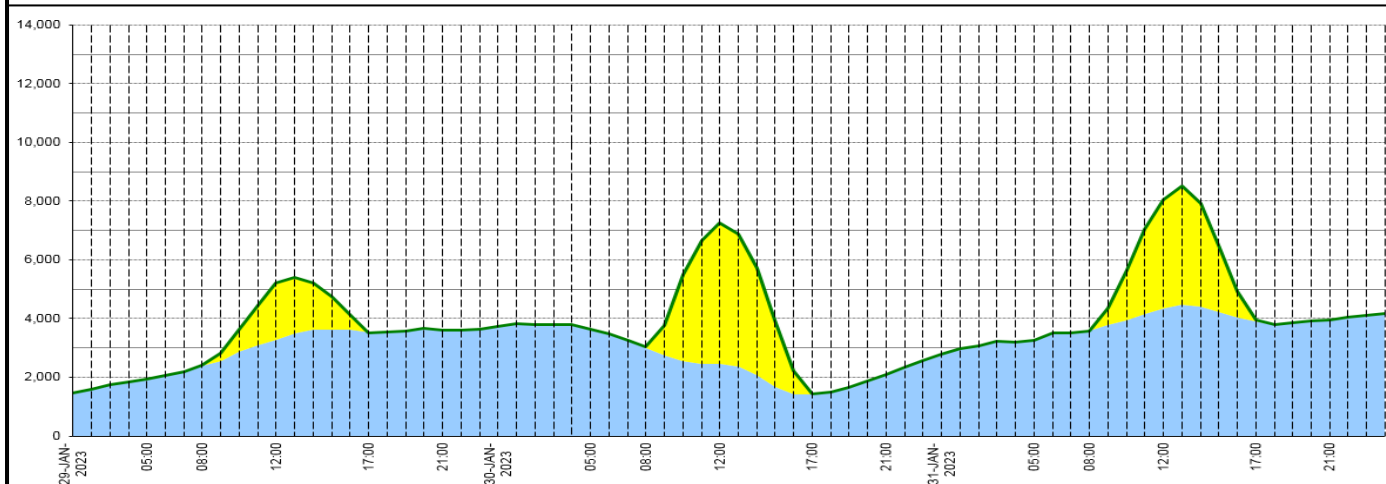
## Wind Power Forecast



## Expected embedded generation (MWs)

### Embedded Generation Forecast

	29-JAN-2023					30-JAN-2023					31-JAN-2023				
	05:00	08:00	12:00	17:00	21:00	00:00	05:00	08:00	12:00	17:00	21:00	00:00	05:00	08:00	12:00
Solar (MW)	0	0	1931	6	0	0	0	40	4787	19	0	0	0	0	3702
Wind (MW)	1945	2405	3291	3520	3598	3725	3627	3000	2459	1428	2083	2803	3272	3586	4347
STOR (MW)	0	0	0	0	0	0	0	0	0	0	0	0	0	0	0
Total (MW)	1945	2405	5222	3526	3598	3725	3627	3040	7246	1447	2083	2803	3272	3586	8049



Weather	Source	Commentary
Latest forecast (Summary)	<a href="#">Met Office</a> <a href="#">SEPA</a> <a href="#">Natural Resources Wales</a>	<b>Today:</b> Gales and showers in the far northeast easing. Most parts bright and breezy with sunny spells; sunniest in the south and east. Cloud and rain arriving in the far northwest later, where winds will also begin to pick up again. <b>Tonight:</b> Cloud and outbreaks of rain, heavy in the northwest, will move southeastwards across most parts. Blustery showers following to northwestern areas. Windy, with gales in the north and west.
General Weather Concerns e.g. wind, rain, snow, flooding, GB Weather Warnings	<a href="#">Met Office</a> <a href="#">Weather Warnings</a> <a href="#">SEPA</a> <a href="#">Natural Resources Wales</a>	<b>UK Weather Warnings</b> Yellow warning of wind Areas affected: Central, Tayside & Fife   Grampian   Highlands & Eilean Siar   Orkney & Shetland   SW Scotland, Lothian Borders   Strathclyde Starts: 20:00 GMT on Tue 31 January Ends: 09:00 GMT on Wed 1 February Very strong winds expected to bring some disruption to parts of Scotland. - There is a small chance of injuries and danger to life from flying debris - There is a slight chance of some damage to buildings, such as tiles blown from roofs - There is a small chance of longer journey times or cancellations as road, rail, air and ferry services are affected

Weather	Source	Commentary
		<ul style="list-style-type: none"> <li>- There is a small chance that some roads and bridges could close</li> <li>- There is a slight chance that power cuts may occur, with the potential to affect other services, such as mobile phone coverage</li> <li>- There is a small chance that injuries and danger to life could occur from large waves and beach material being thrown onto sea fronts, coastal roads and properties</li> </ul>
		<b>Flood Warnings</b> 9 flood warnings and 25 flood alerts issued for England.  0 flood warnings and 2 flood alerts issued for Scotland.  0 flood warning and 0 flood alerts issued for Wales.

*Contains public sector information licensed under the Open Government Licence v1.0*

Further Information	
BM Reports	<a href="https://www.bmreports.com">https://www.bmreports.com</a>
System Balancing Reports	<a href="https://www.nationalgrideso.com/balancing-data/system-balancing-reports">https://www.nationalgrideso.com/balancing-data/system-balancing-reports</a>
Forecast Volumes and Costs	<a href="https://www.nationalgrideso.com/balancing-data/forecast-volumes-and-costs">https://www.nationalgrideso.com/balancing-data/forecast-volumes-and-costs</a>
NGESO Insights	<a href="https://www.nationalgrideso.com/insights">https://www.nationalgrideso.com/insights</a>