

National Electricity Transmission System Status Report

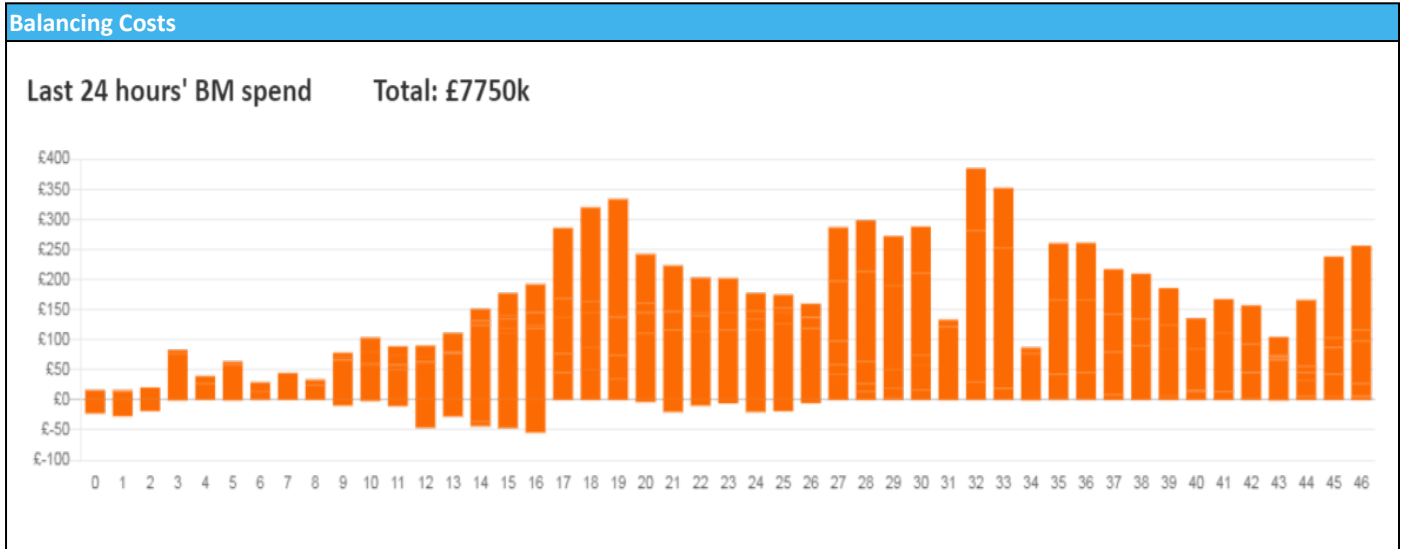


nationalgridESO

National Electricity Transmission System Status Report
Thursday 24 November 2022

Today's High Level Risk Status Forecast for the next 24h			
General Status		Voltage	
Demand		System Inertia	
System Margins		Weather	
Generation		Transmission	
Active Constraints			
System Warning			

Today's Minimum De-Rated Margin	11782 (SP 21)	
Current BMU Largest Loss Risk	Generation	1500 MW
	Demand	1050 MW



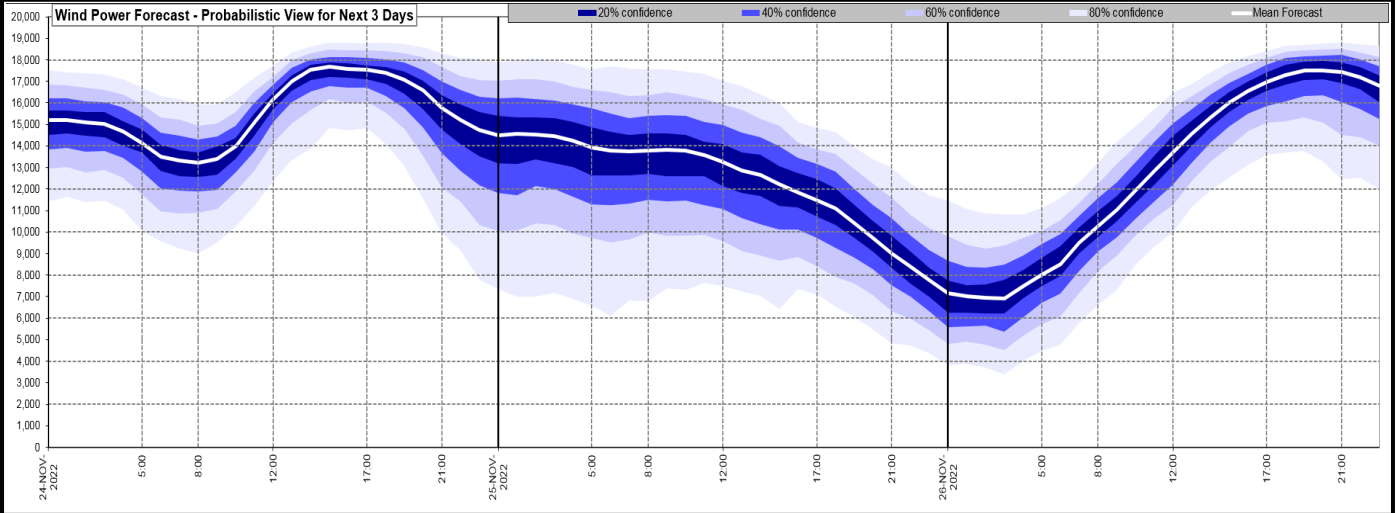
Yesterday's Market Summary

Cash Out Price (Max)	£247 (SP 34)
Cash Out Price (Min)	£71 (SP 16)
Peak Demand Yesterday	41,299 MW
Minimum Demand	20,758 MW

Interconnector
Net Transfer Capacity (MWs)

Today	Import	Export	Remarks
Netherlands (BritNed)	1100	1133	Fully Available
France (IFA2)	1014	1014	Fully Available
Belgium (Nemo)	1000	1025	Fully Available
Ireland (EWIC)	500	530	Fully Available
France (ElecLink)	1014	1014	Fully Available
France (IFA)	1000	1000	Partially Available
Northern Ireland (MOYLE)	500	500	Fully Available
Norway (NSL)	1400	1400	Fully Available

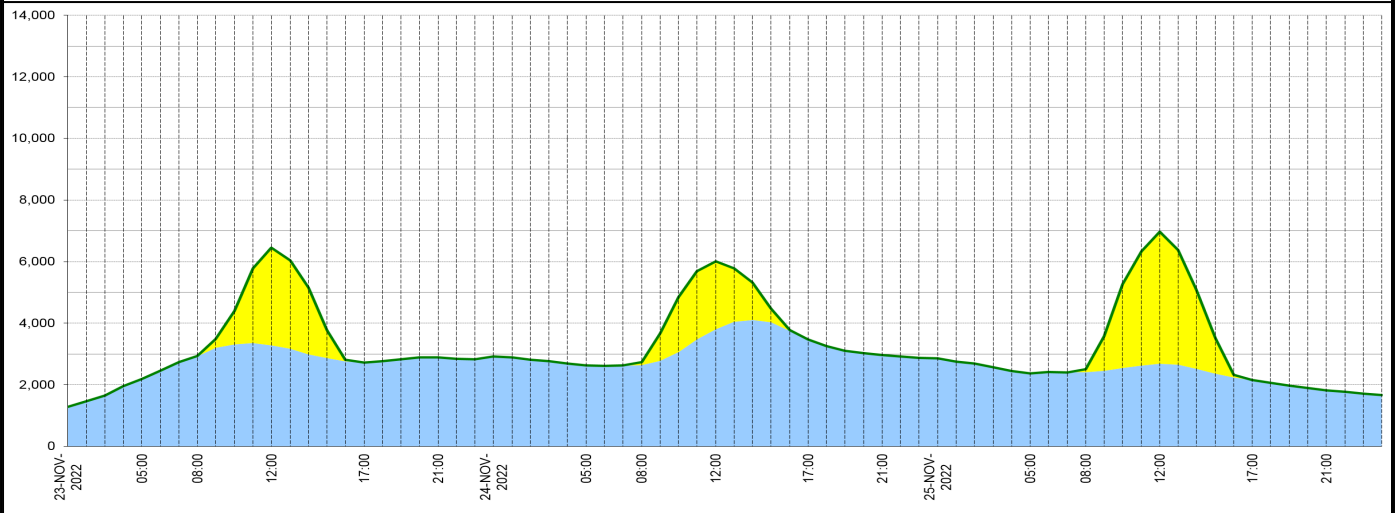
Wind Power Forecast



Expected embedded generation (MWs)

Embedded Generation Forecast

	23-NOV-2022					24-NOV-2022					25-NOV-2022						
	05:00	08:00	12:00	17:00	21:00	00:00	05:00	08:00	12:00	17:00	21:00	00:00	05:00	08:00	12:00	17:00	21:00
Solar (MW)	0	0	3165	0	0	0	0	94	2199	0	0	0	0	95	4282	0	0
Wind (MW)	2185	2932	3282	2722	2895	2927	2629	2644	3806	3473	2965	2854	2374	2409	2687	2154	1817
STOR (MW)	0	0	0	0	0	0	0	0	0	0	0	0	0	0	0	0	0
Total (MW)	2185	2932	6447	2722	2895	2927	2629	2738	6005	3473	2965	2854	2374	2504	6969	2154	1817



Weather	Source	Commentary
Latest forecast (Summary)	Met Office SEPA Natural Resources Wales	<p>Today: :Many places starting dry with sunny spells, although a few showers in the south and west. A band of heavy rain and squally winds will reach the west later this morning and move east across all areas by evening.</p> <p>Tonight: Rain clearing the east, then windy with clear spells and showers, some heavy with thunder in the north and west. Turning chilly with local frost inland as winds ease later.</p>
General Weather Concerns e.g. wind, rain, snow, flooding, GB Weather Warnings	Met Office Weather Warnings SEPA Natural Resources Wales	<p>UK Weather Warnings Yellow warning of wind Areas affected: Northern Ireland SW Scotland, Lothian Borders Strathclyde Starts: 08:00 GMT on Thu 24 November Ends: 14:00 GMT on Thu 24 November Strong winds may lead to transport disruption on Thursday. - Some delays to road, rail, air and ferry transport are likely - Delays for high-sided vehicles on exposed routes and bridges likely - It's likely that some coastal routes, sea fronts and coastal communities will be affected by spray and/or large waves Issued at: 10:33 GMT on Wed 23 November</p> <p>Yellow warning of rain and wind Areas affected: London & South East England North West England South West</p>

Weather	Source	Commentary
		<p>England Wales West Midlands</p> <p>Starts: 10:00 GMT on Thu 24 November Ends: 19:00 GMT on Thu 24 November</p> <p>A brief spell of heavy rain and strong, gusty winds perhaps causing some transport disruption and flooding.</p> <ul style="list-style-type: none"> - Spray and flooding on roads probably making journey times longer - Some delays to road, rail, air and ferry transport are likely - Delays for high-sided vehicles on exposed routes and bridges likely - Flooding of a few homes and businesses is possible <p>Issued at: 09:56 GMT on Wed 23 November</p>
		<p>Flood Warnings</p> <p>2 flood warnings and 83 flood alerts issued for England.</p> <p>2 flood warnings and 2 flood alerts issued for Scotland.</p> <p>1 flood warnings and 9 flood alerts issued for Wales.</p>

Contains public sector information licensed under the Open Government Licence v1.0

Further Information	
BM Reports	https://www.bmreports.com
System Balancing Reports	https://www.nationalgrideso.com/balancing-data/system-balancing-reports
Forecast Volumes and Costs	https://www.nationalgrideso.com/balancing-data/forecast-volumes-and-costs
NGESO Insights	https://www.nationalgrideso.com/insights