

**National Electricity  
Transmission System Status Report**



national**grid**ESO

National Electricity Transmission System Status Report  
Friday 22 July 2022

Today's High Level Risk Status Forecast for the next 24h			
General Status		Voltage	
Demand		System Inertia	
System Margins		Weather	
Generation		Transmission	
Active Constraints			
<a href="#">System Warning</a>			

<a href="#">Today's Minimum De-Rated Margin</a>	2506 (SP 21)	
Current BMU Largest Loss Risk	Generation	1700 MW
	Demand	1050 MW

Balancing Costs

Last 24 hours' BM spend Total: £1023k



Yesterday's Market Summary

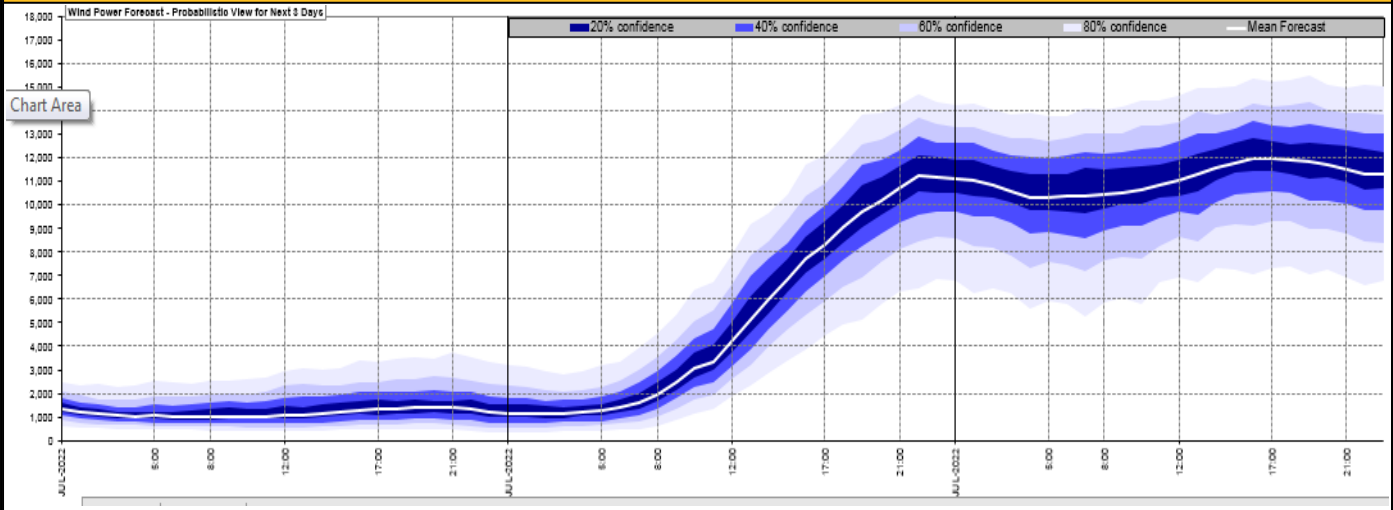
<a href="#">Cash Out Price (Max)</a>	£476.00 (SP 30)
<a href="#">Cash Out Price (Min)</a>	£100.00 (SP 37,38)
<a href="#">Peak Demand Yesterday</a>	30,437 MW
Minimum Demand	19,862 MW

Interconnector

Net Transfer Capacity (MWs)

Today	Import	Export	Remarks
Netherlands (BritNed)	1100	1133	Fully Available
France (IFA2)	0	0	Unplanned Outage
Belgium (Nemo)	1020	1025	Fully Available
Ireland (EWIC)	500	530	Fully Available
France (ElecLink)	1014	1014	Fully Available
France (IFA)	1000	1000	Partially Available
Northern Ireland (MOYLE)	0	0	Planned Outage
Norway (NSL)	1260	1100	ESO NTC restriction

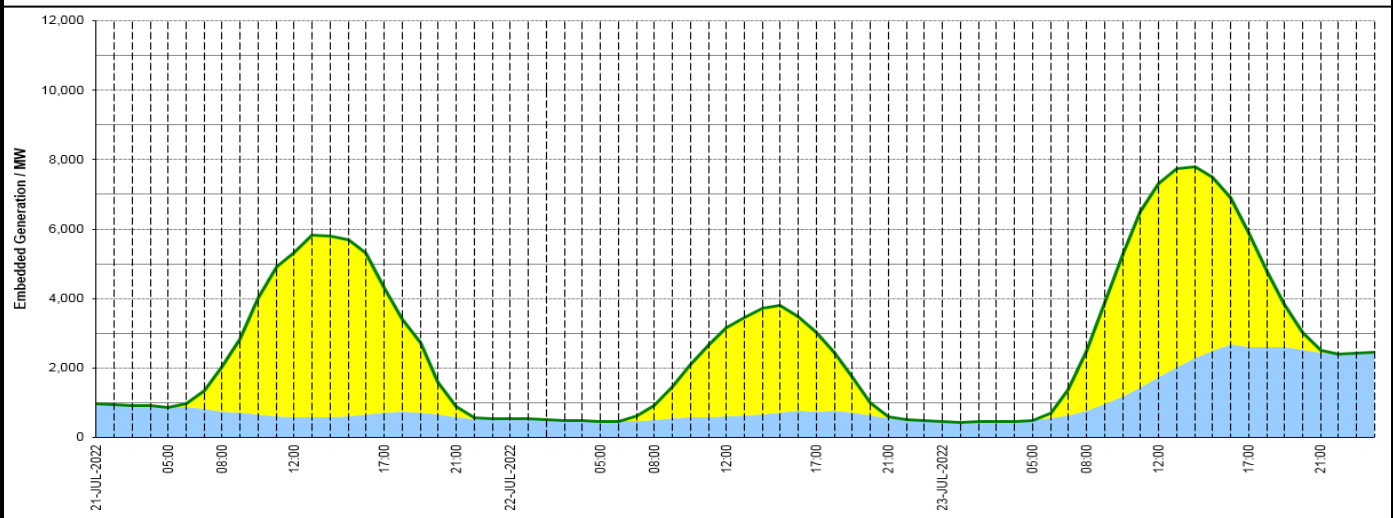
**Wind Power Forecast**



**Expected embedded generation (MWs)**

**Embedded Generation Forecast**

	21-JUL-2022					22-JUL-2022					23-JUL-2022						
	05:00	08:00	12:00	17:00	21:00	00:00	05:00	08:00	12:00	17:00	21:00	00:00	05:00	08:00	12:00	17:00	21:00
Solar (MW)	0	1278	4735	3612	306	0	0	430	2550	2267	36	0	0	1724	5566	3269	56
Wind (MW)	863	751	589	711	575	536	461	491	599	748	548	452	485	765	1731	2598	2452
STOR (MW)	0	0	0	0	0	0	0	0	0	0	0	0	0	0	0	0	0
<b>Total (MW)</b>	<b>863</b>	<b>2029</b>	<b>5324</b>	<b>4323</b>	<b>881</b>	<b>536</b>	<b>461</b>	<b>921</b>	<b>3149</b>	<b>3015</b>	<b>584</b>	<b>452</b>	<b>485</b>	<b>2489</b>	<b>7297</b>	<b>5867</b>	<b>2508</b>



Weather	Source	Commentary
Latest forecast (Summary)	<a href="#">Met Office</a> <a href="#">SEPA</a> <a href="#">Natural Resources Wales</a>	<p><b>Today:</b> Rather cloudy for many with outbreaks of patchy rain and drizzle over central and northern parts of the UK. Scattered showers developing in the south will be locally heavy and slow moving with a risk of thunder.</p> <p><b>Tonight:</b> The evening rain and thunderstorms fading with some cloud breaks then developing. Wind increasing in the far west later on.</p>
General Weather Concerns e.g. wind, rain, snow, flooding, GB Weather Warnings	<a href="#">Met Office</a> <a href="#">Weather Warnings</a> <a href="#">SEPA</a> <a href="#">Natural Resources Wales</a>	<p><b>UK Weather Warnings</b> Yellow weather warning for thunderstorms in place. Areas affected: London &amp; South East England, South West England, Wales, and West Midlands</p> <p><b>Flood Warnings</b> 0 flood warnings are currently in force for England.  No flood warnings are currently in force for Scotland.  No flood warnings are currently in force for Wales.</p>

Contains public sector information licensed under the Open Government Licence v1.0

Further Information	
BM Reports	<a href="https://www.bmreports.com">https://www.bmreports.com</a>
System Balancing Reports	<a href="https://www.nationalgrideso.com/balancing-data/system-balancing-reports">https://www.nationalgrideso.com/balancing-data/system-balancing-reports</a>
Forecast Volumes and Costs	<a href="https://www.nationalgrideso.com/balancing-data/forecast-volumes-and-costs">https://www.nationalgrideso.com/balancing-data/forecast-volumes-and-costs</a>
NGESO Insights	<a href="https://www.nationalgrideso.com/insights">https://www.nationalgrideso.com/insights</a>