

# Offshore BMU Configuration Working Group

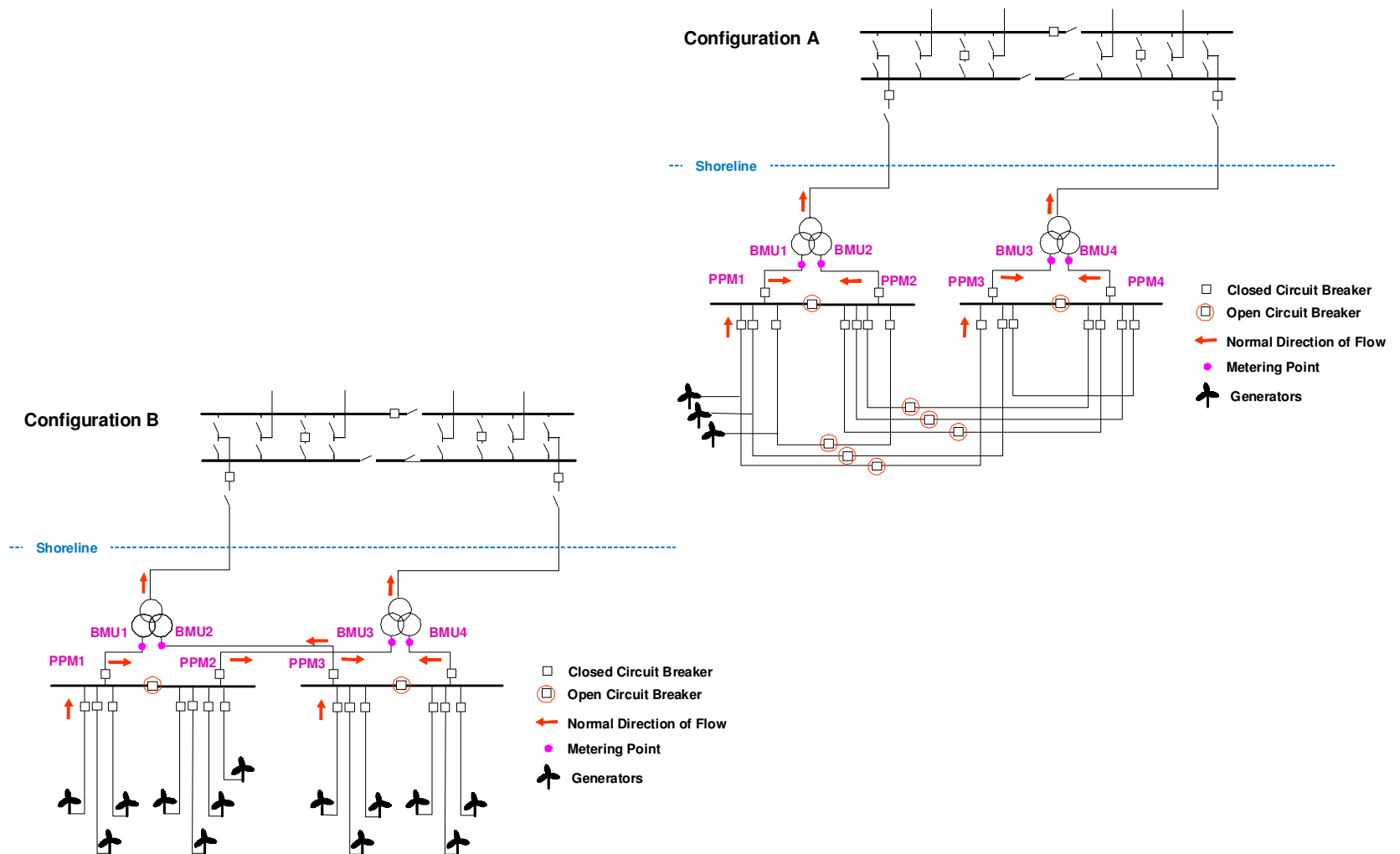
Working Group Report  
GCRP September 2012

## Background to the Working Group

---

- The Working Group was asked to review the information exchanged concerning Offshore BMUs
  - Group asked to consider onshore BMUs as well
- Information required both NGET and Users to enable NGET to manage the Transmission System and for Users to manage theirs
- Need arose given that the configuration and constituent parts of a BM Unit can change in some circumstances.
- This ability to change was facilitated by BSC modification P240 which introduced the concept of Switching Groups

# Discussion: Example Configurations



## Proposed Changes

---

- Modify the Power Park Module Availability Matrix in OC2 Appendix A and BC1 Appendix 1
- Modify PC.A.3.2.2 and PC.A.3.2.4 to link PPMs to their respective BM Units
- Modify BC1 to relax the requirement to re-submit a Power Park Module Availability Matrix by fax in the event of a change
  - changes should be notified by telephone and only supplemented by fax when deemed absolutely necessary by National Grid

## Proposed Changes to the PPM Matrix

---

<b>BM Unit NAME</b>				
<b>POWER PARK MODULE {IDENTIFIER}:</b>				
<b>POWER PARK UNIT AVAILABILITY</b>	<b>POWER PARK UNITS</b>			
	[Type A]	[Type B]	[Type C]	...
Description (Make/Model)				
Number of Units				
<b>POWER PARK MODULE {IDENTIFIER}:</b>				
<b>POWER PARK UNIT AVAILABILITY</b>	<b>POWER PARK UNITS</b>			
	[Type A]	[Type B]	[Type C]	...
Description (Make/Model)				
Number of Units				
...				

## Proposed Changes to BC1.A

---

- BC1.A.1.8.2 In the absence of the correct submission of a **Power Park Module Availability Matrix** the last submitted (or deemed submitted) **Power Park Module Availability Matrix** shall be taken to be the **Power Park Module Availability Matrix** submitted hereunder.
- BC1.A.1.8.3 **NGET** will rely on the **Power Park Units, Power Park Modules and BM Units** specified in such **Power Park Module Availability Matrix** running as indicated in the **Power Park Module Availability Matrix** when it issues an instruction in respect of the ~~Power Park Module~~ **BM Unit**;
- BC1.A.1.8.4 Subject as provided in PC.A.3.2.4 any changes to **Power Park Module** or **BM Unit** configuration, or availability of **Power Park Units** which affects the information set out in the **Power Park Module Availability Matrix** must be notified immediately to **NGET** in accordance with the relevant provisions of **BC1**. Initial notification may be by telephone. In some circumstances, such as a significant re-configuration of a **Power Park Module** due to an unplanned outage, a revised **Power Park Module Availability Matrix** must be supplied on **NGET**'s request.

## Next Steps

---

- The Panel is invited to:
  - 1) Note the conclusions of the Working Group
  - 2) Consider taking proposals forward to consultation