

# Britain's Electricity Explained: January 2020



**Roisin Quinn**  
Head of National Control

The engineers in our control room balance supply and demand for electricity in Great Britain minute by minute, so it's great to be able to showcase their work in our new monthly report.

In January they worked around the clock to manage 22 thousand gigawatt hours of electricity through Great Britain's network, that's enough to power over 4500 billion kettles or 23 billion washing machines all running at the same time!

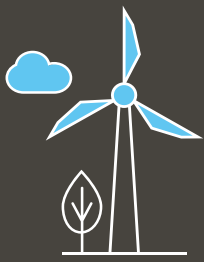
My team influence the mix of power too, using the generators and network assets available to deliver safe and reliable electricity, always choosing the cheapest mix for consumers.

Our new report shows that January is typical of the changing nature of GB electricity, with a reduced reliance on coal power stations (there are only 5 remaining in GB) and almost a quarter of electricity coming from wind power – trends we expect to continue as we move towards our ambition of being able to operate carbon free by 2025.

**nationalgrid**ESO



Gas	32.1%	Coal	5.44%
Wind	23.76%	Solar	1.16%
Nuclear	19.75%	Imports	8.22%
Biomass	7.07%	Hydro	2.07%



## Renewables



Average use increased to 27%

Maximum use was 45.77%

Average share of low carbon mix was 47%



## Imports & exports



Energy in 1997.28 GWh



Energy out 829.61 GWh



## Carbon intensity



Average for the month is up to 226.0 gCO<sub>2</sub>/kWh

Lowest carbon intensity time was 4am on 8 Jan



## Coal

5.44% this month / 4.7% last month

Last year's average for the same period was 6.36%



## Demand

22906.2 GWh run through network (That's 4581 billion kettles)

Peak demand was 6pm on 22 Jan



## View in real-time

To view our data in real-time, please download the ESO app for Apple or Android. Or visit [carbonintensity.org.uk](https://carbonintensity.org.uk)

