

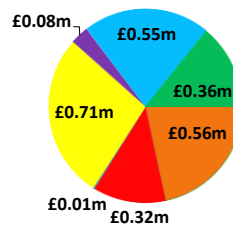
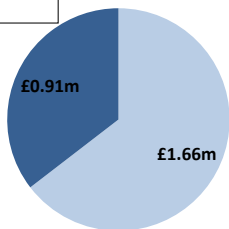
Date: Tuesday 27 Aug 2019

BSUoS Charge Estimate: £2.23/MWh
Total Outturn: £2.58m

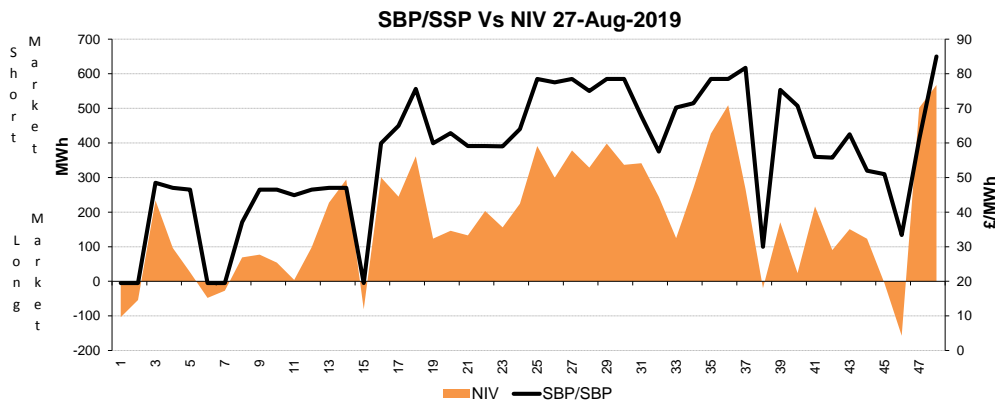
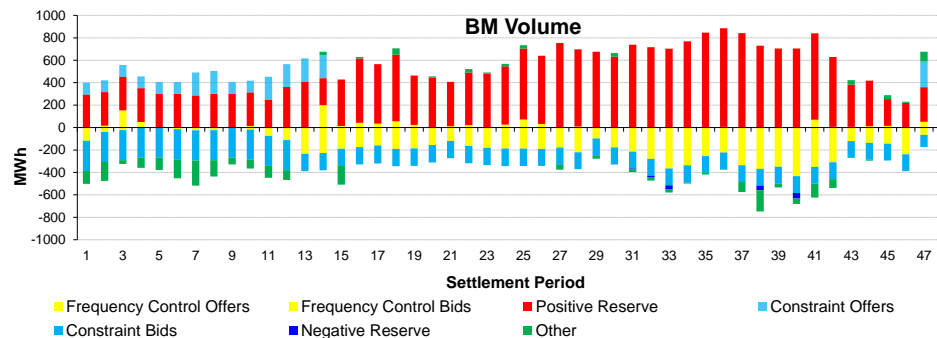
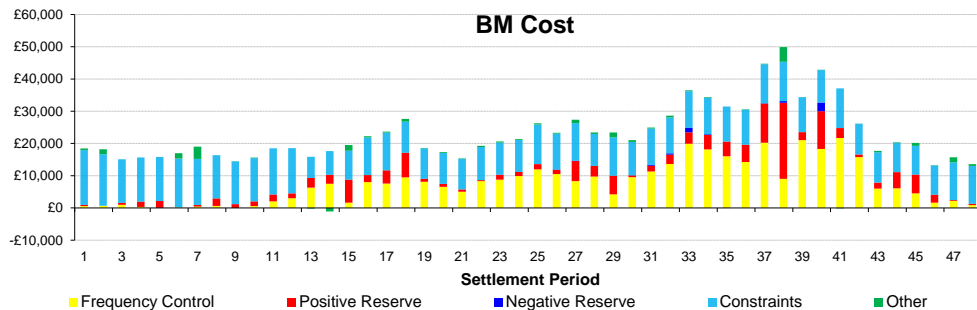
Daily Balancing Costs

BM Cost (Indicative)

AS Cost (Estimate)



- Energy Imbalance
- Positive Reserve (Op Res + STOR)
- Negative Reserve (Footroom)
- Frequency Control (Response + Fast Reserve)
- Other Reserve (Ancillary Costs Only)
- Constraints (BM & Trades only)
- Other (Reactive + Black Start + BM & AS General)



Western Link status: Available

Commentary

The market was prevalently short in excess of 800MW throughout the 24 hours. Between the afternoon and the late evening multiple trades on the interconnectors were taken for positive margin. Power flow restrictions were in place in England following planned outages and were solved with trades on generating units. Overnight, trades were undertaken to control the RoCoF risk and to manage the voltage levels in England.