

**National Electricity
Transmission System Status Report**



national**grid**ESO

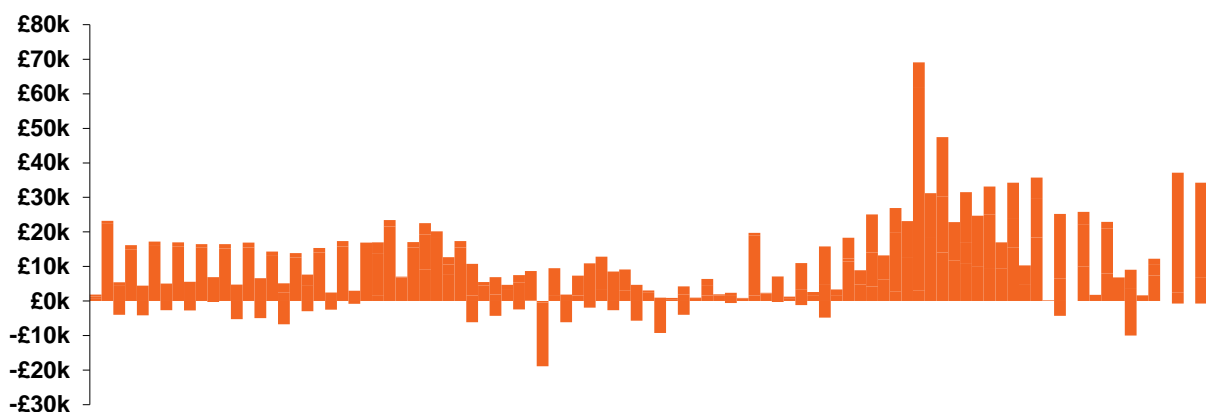
National Electricity Transmission System Status Report
Wednesday 24 July 2019

Today's High Level Risk Status Forecast for the next 24h			
General Status		Voltage	
Demand		System Inertia	
System Margins		Weather	
Generation		Transmission	
Active Constraints			

Today's Minimum De-Rated Margin	3901 MW (SP 38)	
System Warnings	None	
Current BMU Largest Loss Risk	Generation	1260MW
	Demand	560MW

Balancing Costs

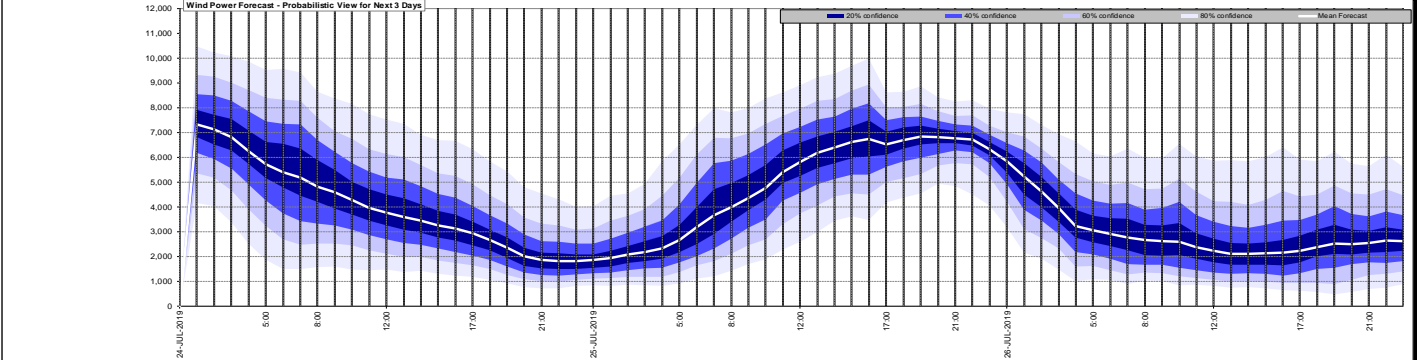
Last 24 hours' BM spend Total: £1122k



Yesterday's Market Summary	
Cash out price (Max)	£108.00/MWh (SP36)
Cash Out Price (Min)	£20.55/MWh (SP21)
Peak Demand Yesterday	33451

Interconnectors Net Transfer Capacity (MWs)			
Today	Import	Export	
Netherlands (BritNed)	1000	1030	Fully available
France (IFA)	2000	2000	Fully Available
Belgium (Nemo)	1013	1013	Fully Available
Ireland (EWIC)	500	530	Fully Available
Northern Ireland (MOYLE)	395	500	Partially available.

Wind Power Forecast



Key:

- 20% confidence
- 40% confidence
- 60% confidence
- 80% confidence
- Mean Forecast

Expected embedded generation (MWs)

Embedded Generation Forecast

	23-JUL-2019					24-JUL-2019					25-JUL-2019						
	05:00	08:00	12:00	17:00	21:00	00:00	05:00	08:00	12:00	17:00	21:00	00:00	05:00	08:00	12:00	17:00	21:00
Solar (MW)	0	1890	7650	4840	76	3	0	2243	7649	4902	66	0	0	2496	7209	4079	34
Wind (MW)	957	1025	1307	1313	1224	1415	1272	1177	1368	1194	691	720	823	1054	1482	1557	1276
STOR (MW)	0	0	0	0	0	0	0	0	0	0	0	0	0	0	0	0	0
Total (MW)	957	2915	8957	6153	1300	1418	1272	3420	9017	6096	757	720	823	3550	8691	5636	1310

