

**National Electricity  
Transmission System Status Report**

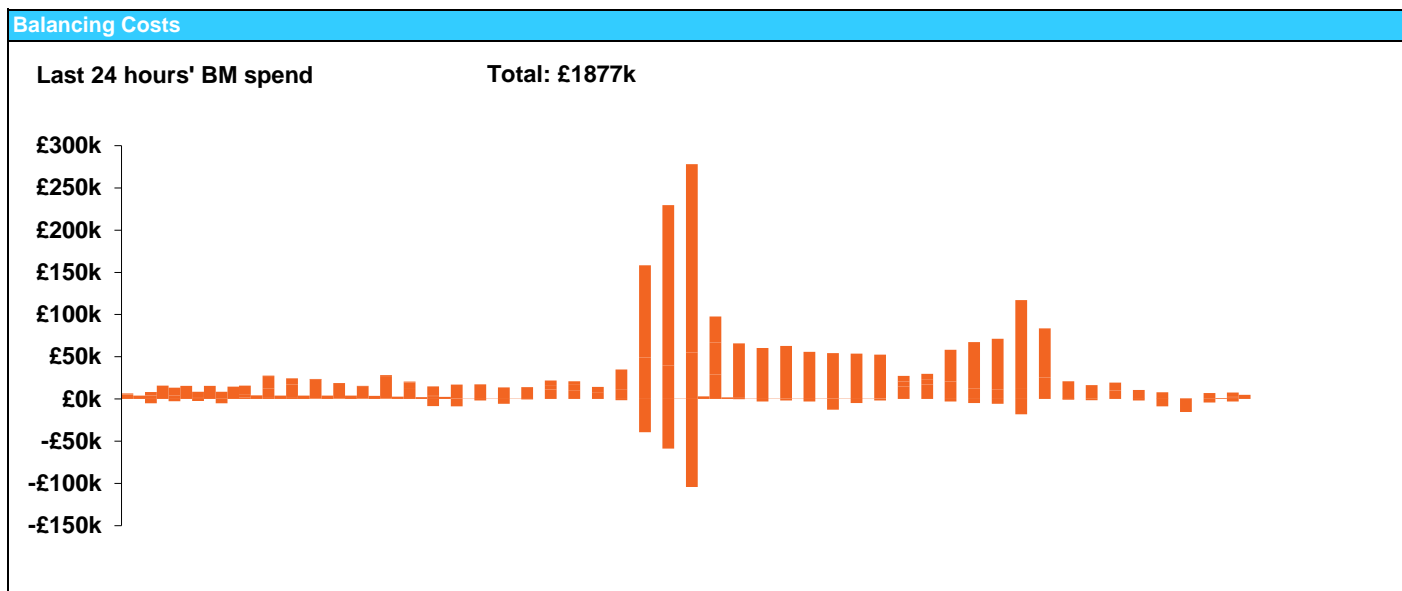


**nationalgrid**ESO

**National Electricity Transmission System Status Report**  
Tuesday 25 June 2019

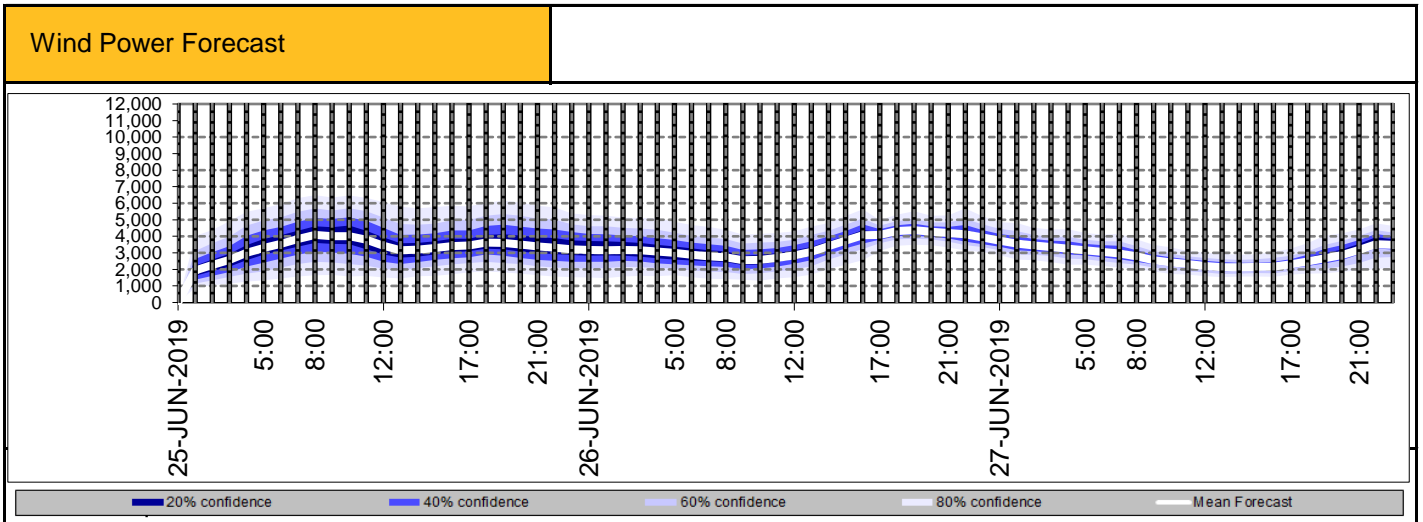
Today's High Level Risk Status Forecast for the next 24 hours			
General Status		Voltage	
Demand		System Inertia	
System Margins		Weather	
Generation		Transmission	
Active Constraints			

<a href="#">Today's Minimum De-Rated Margin</a>	2413.90 MW (SP38)	
<a href="#">System Warnings</a>	None	
Current BMU Largest Loss Risk	Generation	1200MW
	Demand	560MW



Yesterday's Market Summary	
<a href="#">Cash out price (Max)</a>	£375.00/MWh (SP23 24 25)
<a href="#">Cash Out Price (Min)</a>	£21.31/MWh (SP2)
<a href="#">Peak Demand Yesterday</a>	33,564 MW

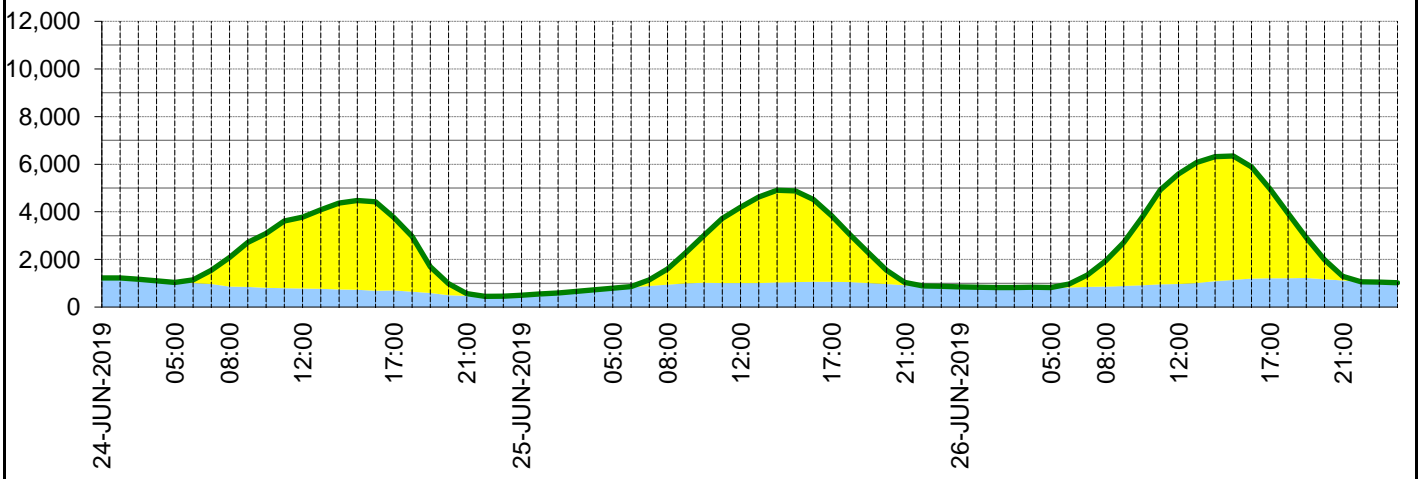
Interconnectors			
Net Transfer Capacity (MWs)			
Today	Import	Export	
Netherlands (BritNed)	1000	1030	Fully available
France (IFA)	1000	1000	Bipole 1 on outage
Belgium (Nemo)	1013	1013	Fully Available
Ireland (EWIC)	500	530	Fully Available
Northern Ireland (MOYLE)	395	500	Partially available.



### Expected embedded generation (MWs)

#### Embedded Generation Forecast

	24-JUN-2019					25-JUN-2019					26-JUN-2019						
	05:00	08:00	12:00	17:00	21:00	00:00	05:00	08:00	12:00	17:00	21:00	00:00	05:00	08:00	12:00	17:00	21:00
Solar (MW)	0	1220	3000	3070	100	0	0	658	3192	2773	118	0	0	1080	4614	3769	177
Wind (MW)	1041	866	779	694	467	501	790	947	1005	1061	916	852	816	858	971	1208	1112
STOR (MW)	0	0	0	0	0	0	0	0	0	0	0	0	0	0	0	0	0
<b>Total (MW)</b>	<b>1041</b>	<b>2086</b>	<b>3779</b>	<b>3764</b>	<b>567</b>	<b>501</b>	<b>790</b>	<b>1605</b>	<b>4197</b>	<b>3834</b>	<b>1034</b>	<b>852</b>	<b>816</b>	<b>1938</b>	<b>5585</b>	<b>4977</b>	<b>1289</b>



Weather	Source	Commentary
Latest forecast (Summary)	<a href="#">Met Office</a> <a href="#">SEPA</a> <a href="#">Natural Resources Wales</a>	<p><b>Today:</b> Thunderstorms and torrential rain easing from eastern and some central areas, but remaining cloudy and murky with further light rain in places. Brightening up across western and southern parts, where feeling warm and humid, perhaps sparking the odd heavy shower</p> <p><b>Tonight:</b> Largely dry and cloudy overnight with mist and murk developing, especially near North Sea coasts. A few showers may affect the southwest later on. Warm and humid in the south.</p>
General Weather Concerns e.g. wind, rain, snow, flooding, GB Weather Warnings	<a href="#">Met Office Weather</a> <a href="#">SEPA</a> <a href="#">Natural Resources Wales</a>	<p><b>Weather Warnings:</b> Yellow warning of rain for East Midlands   North West England   Wales   West Midlands from 00:00 BST on Tue 25 June.</p> <p>Yellow warning of thunderstorms for East Midlands   East of England   London &amp; South East England   South West England   West Midlands   Yorkshire &amp; Humber from 00:00 BST on Tue 25 June.</p> <p><b>Flood Warnings:</b> There is a small chance that homes and businesses could be flooded quickly, with damage to some buildings from floodwater, lightning strikes, hail or strong winds</p>

*Contains public sector information licensed under the Open Government Licence v1.0*

Further Information	
BM Reports	<a href="https://www.bmreports.com">https://www.bmreports.com</a>
System Balancing Reports	<a href="https://www.nationalgrideso.com/balancing-data/system-balancing-reports">https://www.nationalgrideso.com/balancing-data/system-balancing-reports</a>
Forecast Volumes and Costs	<a href="https://www.nationalgrideso.com/balancing-data/forecast-volumes-and-costs">https://www.nationalgrideso.com/balancing-data/forecast-volumes-and-costs</a>
NGESO Insights	<a href="https://www.nationalgrideso.com/insights">https://www.nationalgrideso.com/insights</a>