

**National Electricity  
Transmission System Status Report**



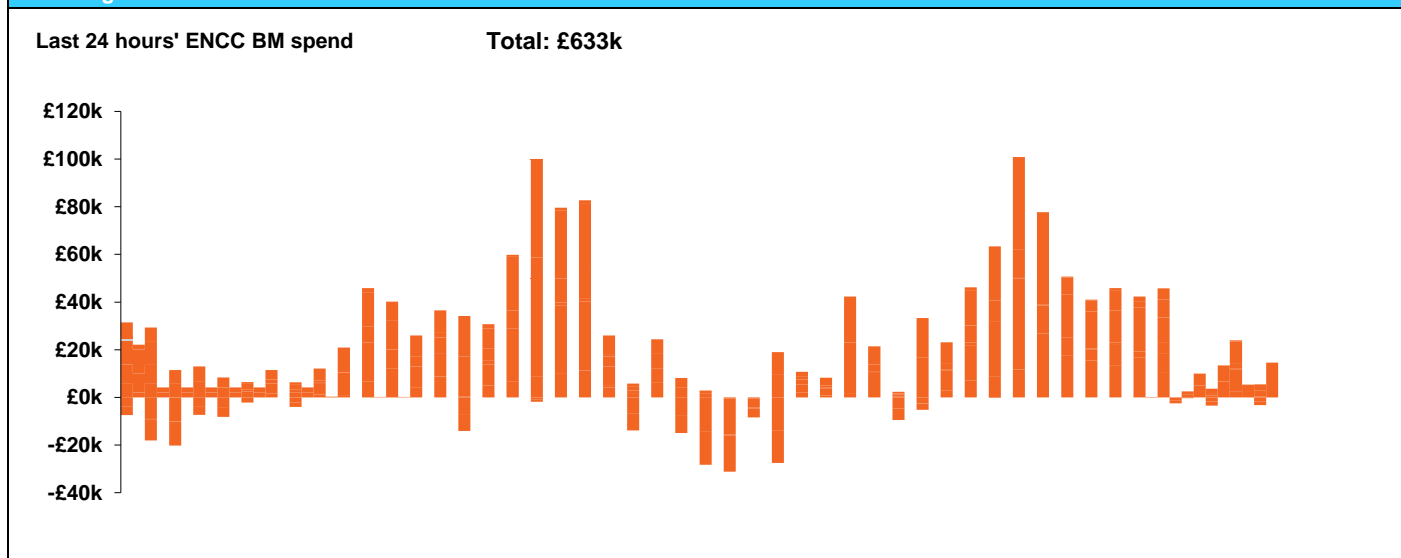
national**grid**ESO

**National Electricity Transmission System Status Report**  
Friday 19 April 2019

Today's High Level Risk Status Forecast for the next 24h			
General Status		Voltage	
Demand		System Inertia	
System Margins		Weather	
Generation		Transmission	
Active Constraints			

<a href="#">Today's Minimum De-Rated Margin</a>	10541 MW (SP 43)	
<a href="#">System Warnings</a>	None	
Current BMU Largest Loss Risk	Generation	1260MW
	Demand	560MW

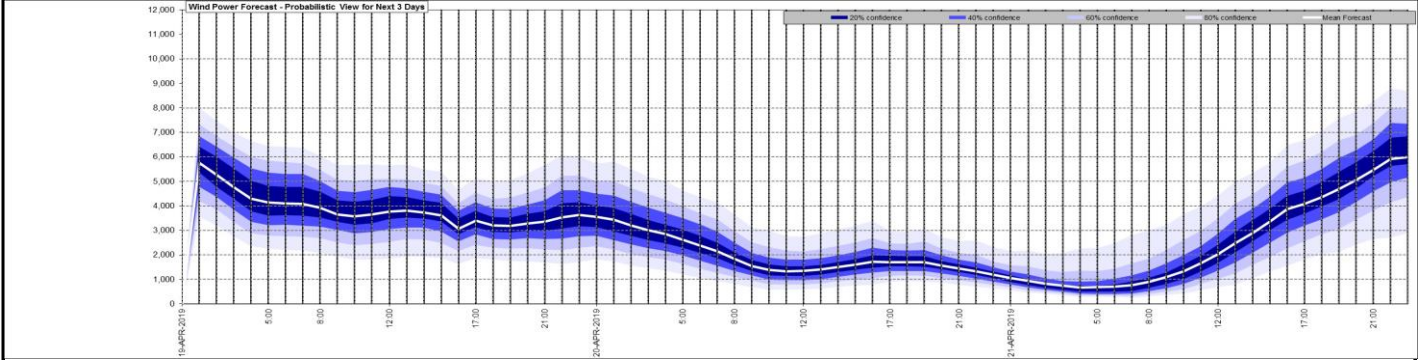
**Balancing Costs**



Yesterday's Market Summary	
<a href="#">Cash out price (Max)</a>	£83.50/MWh (SP 18)
<a href="#">Cash Out Price (Min)</a>	- £25.00/MWh (SP 28)
<a href="#">Peak Demand Yesterday</a>	32,073 MW

Interconnectors Net Transfer Capacity (MWs)			
Today	Import	Export	
Netherlands (BritNed)	1000	1000	Fully available
France (IFA)	1000	1000	Bipole Outage
Belgium (Nemo)	1013	1013	Fully Available
Ireland (EWIC)	500	530	Fully Available
Northern Ireland (MOYLE)	395	500	Partially available.

### Wind Power Forecast



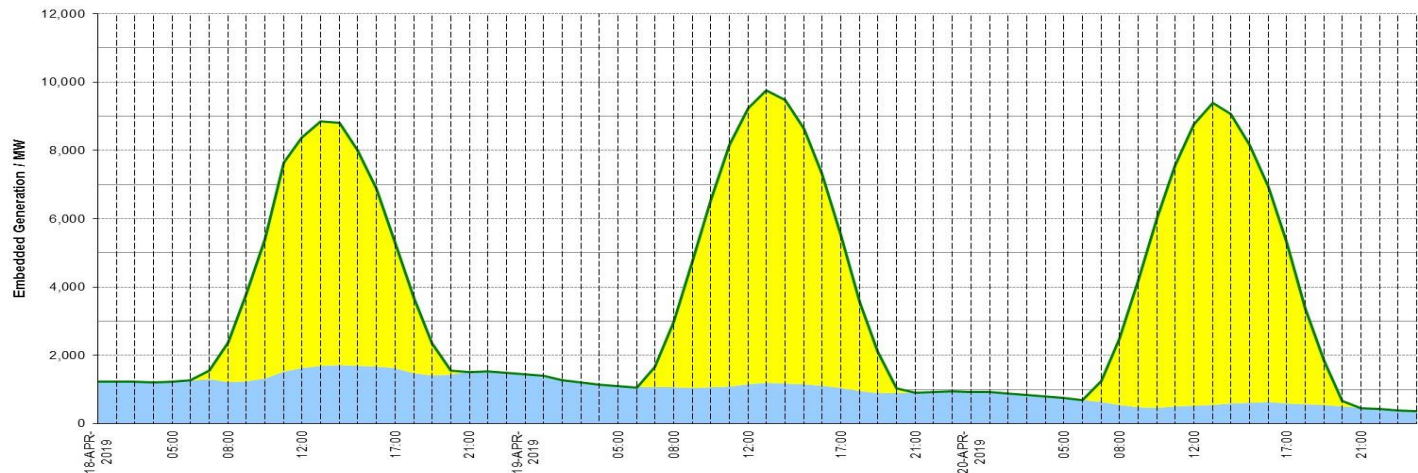
Key:

- 20% confidence
- 40% confidence
- 60% confidence
- 80% confidence
- Mean Forecast

### Expected embedded generation (MWs)

#### Embedded Generation Forecast

	18-APR-2019					19-APR-2019					20-APR-2019						
	05:00	08:00	12:00	17:00	21:00	00:00	05:00	08:00	12:00	17:00	21:00	00:00	05:00	08:00	12:00	17:00	21:00
Solar (MW)	0	1150	6750	3670	2	0	0	1913	8098	4494	0	0	0	1912	8225	4727	0
Wind (MW)	1222	1221	1620	1621	1512	1448	1091	1066	1146	1037	917	935	746	560	536	599	461
STOR (MW)	0	0	0	0	0	0	0	0	0	0	0	0	0	0	0	0	0
<b>Total (MW)</b>	<b>1222</b>	<b>2371</b>	<b>8370</b>	<b>5291</b>	<b>1514</b>	<b>1448</b>	<b>1091</b>	<b>2979</b>	<b>9244</b>	<b>5531</b>	<b>917</b>	<b>935</b>	<b>746</b>	<b>2472</b>	<b>8761</b>	<b>5326</b>	<b>461</b>



Weather	Source	Commentary
Latest forecast (Summary)	<a href="#">Met Office</a> <a href="#">SEPA</a> <a href="#">Natural Resources Wales</a>	<p><b>Today:</b></p> <p>Any pockets of fog clearing swiftly to give a fine day with long spells of sunshine, occasionally hazy due to areas of high cloud. Most will be very warm, but around coasts it will feel fresher, especially North Sea coasts.</p> <p><b>Tonight:</b></p> <p>Dry and largely clear, although patchy fog will develop across eastern and northeastern areas, whilst the far northwest will become cloudy. Chilly in places, but mild in some western parts.</p>
General Weather Concerns e.g. wind, rain, snow, flooding, GB Weather Warnings	<a href="#">Met Office Weather</a> <a href="#">SEPA</a> <a href="#">Natural Resources Wales</a>	<p><b>Weather Warnings:</b></p> <p>There are no Met Office Weather Warnings in force anywhere in the United Kingdom.</p> <p><b>Flood Warnings:</b></p> <p>There are no flood warnings currently.</p>

*Contains public sector information licensed under the Open Government Licence v1.0*

Further Information	
BM Reports	<a href="https://www.bmreports.com">https://www.bmreports.com</a>
System Balancing Reports	<a href="https://www.nationalgrideso.com/balancing-data/system-balancing-reports">https://www.nationalgrideso.com/balancing-data/system-balancing-reports</a>
Forecast Volumes and Costs	<a href="https://www.nationalgrideso.com/balancing-data/forecast-volumes-and-costs">https://www.nationalgrideso.com/balancing-data/forecast-volumes-and-costs</a>
NGESO Insights	<a href="https://www.nationalgrideso.com/insights">https://www.nationalgrideso.com/insights</a>