

# Welcome to Faraday House Warwick,

the home of National Grid Electricity System Operator

**What do you need to know?**

[About Faraday House](#)

[How to get here](#)

[Parking](#)

[Fire Plan](#)

[Reception and Customer Business Lounge](#)

[Facilities](#)



national**grid**ESO

# About Faraday House

Faraday House, home of National Grid Electricity System Operator (NGESO), is situated on Warwick Technology Park, Gallows Hill, Warwick, with great transport links providing easy access to the main regional arteries e.g. M40, M42 and M6.

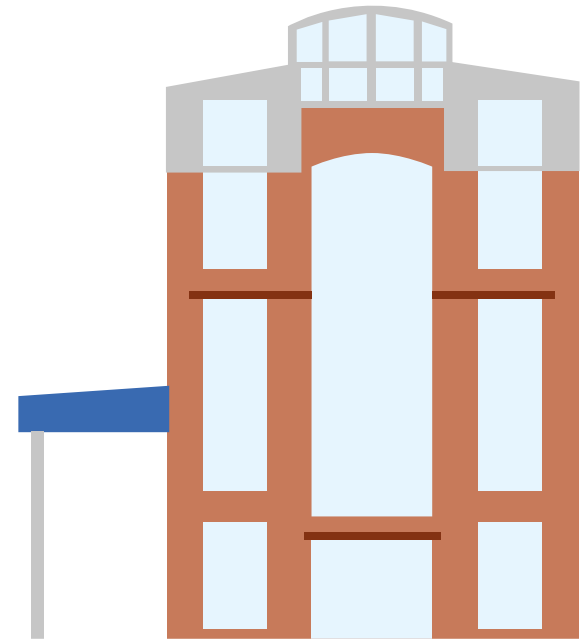
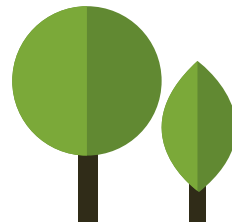
To find Faraday House, please refer to this [location map](#).

Access to Faraday House for visitors is via a dedicated entrance, with [parking](#) available opposite. Arrange visitor parking via your ESO host prior to your visit.

Faraday House includes bespoke [conference, meeting and catering space](#).

If WIFI is required during your visit, please liaise with your host who will set up a guest account for you.

The building opening times will be 6am-8pm Monday – Friday. Between the hours of 07.30-18.00 the Facilities Management team will be available for support.



# How to get here

On arrival please report to the lower Security Gatehouse. Please note that the site uses bollards to manage traffic.

To book [parking](#), please contact your host.

## Public Transport

By Rail, Warwick Station is approximately 10 minutes taxi ride away. Leamington Station is approximately 10 minutes taxi ride away.  
*For information on train operators and times phone National Rail Enquires on 0845 7484950.*

By Air, Birmingham International Airport is approximately 30 minutes drive away.

To locate the site please use CV34 6DA for your SATNAV.



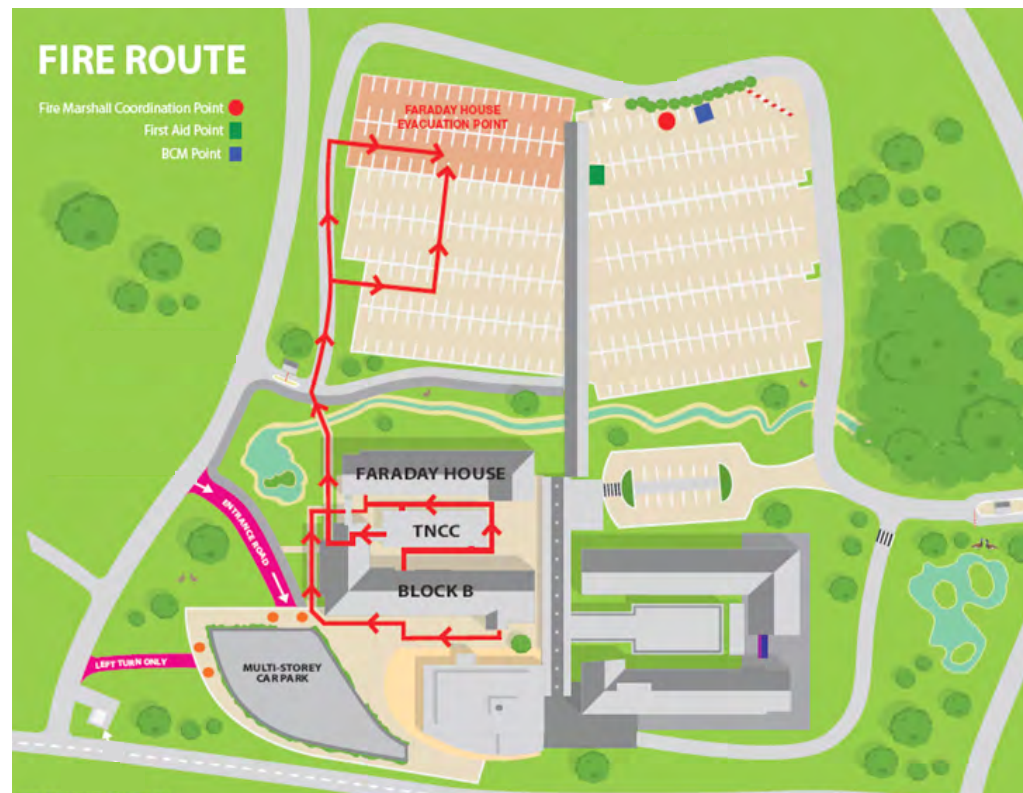
# Fire Plan

In the event of a fire please follow your host.

**The Fire Alarm is tested every Sunday at 10:00hrs.** Outside of these times an intermittent siren is an alert signal, indicating alarm activation in another area of the site; do not evacuate – be prepared for further instruction.

**A continuous alarm is the evacuation signal.** On hearing the continuous alarm immediately leave the building via the nearest fire exit and assemble at the designated fire assembly point upper level of the main car park left hand side signed 'Faraday House'.

Do not delay departure. Do not collect belongings. Do not use lifts. Do not attempt to leave the grounds until advised by security.



# Parking

## Visitors

Visitor car parking spaces can be found at the front of the ESO employee car park. Visitor parking spaces should be booked via your ESO host via the internal Condec system.

Site security will request the name of the person the parking has been booked under and the reference number. It is worth printing off the form provided by your host and handing it to security, this can make access quicker. Site security will advise you where your allocated car parking space is located and they will remind you to reverse park.

## Electric Vehicle Charging

Electric Vehicle Charging units are available on site. Visitors should make any requirements for charging known to their ESO host so appropriate parking arrangements can be made.

## Alternative Parking

Alternatively, you can choose to park at either the St Nicholas car park which is a pleasant 10-minute stroll from Faraday House or at Leamington Spa Train Station carpark which offers a free shuttle bus to Faraday House. Both St Nicholas and Leamington Spa Train station car parks are pay and display car parks not operated by ESO.

## Accessibility

Please note, for any visitors parking at Leamington Spa Train Station, who have accessibility requirements, please pre-arrange a taxi transfer to and from Faraday House with your host.

For those parking at Faraday House, accessible and Occupational Health parking is available, please advise your host of any requirements.

# Reception and Customer Business Lounge

Along with the main entrance and reception, **the Customer Business Lounge** is on level one. All visitors should register at reception to receive a visitor badge and await their ESO host to escort them during their visit.

Customers and National Grid colleagues can freely use the secure customer business lounge area once booked in by an ESO sponsor based in Faraday House. ID will be required. Guest WIFI is available.

Visitors using the business lounge on level one are welcome to help themselves to hot drinks.



## Facilities

WC Toilets

Accessible Toilet

Quiet Room

Reception

Employee Turnstiles

Kitchenette

Cafeteria

Showers

Amphitheatre

Customer Business Lounge

Fire Exit

# Facilities

On your arrival you will be signed in at reception at Faraday House. There are several facilities that you may use during your visit.

Adjacent to Reception is a purpose-built **WIFI** enabled **customer and visitor business lounge** which can be freely utilised between meetings.

**Tea, coffee and water** are freely available in the business lounge.

Should you need to use our **Quiet room** (which is a space for private reflection and prayer), your host can escort you to it. This is a mobile free space with washing facilities located nearby.

