

Date:

Monday 05 Jun 2023

BSUoS Final Tariff: £13.41/MWh

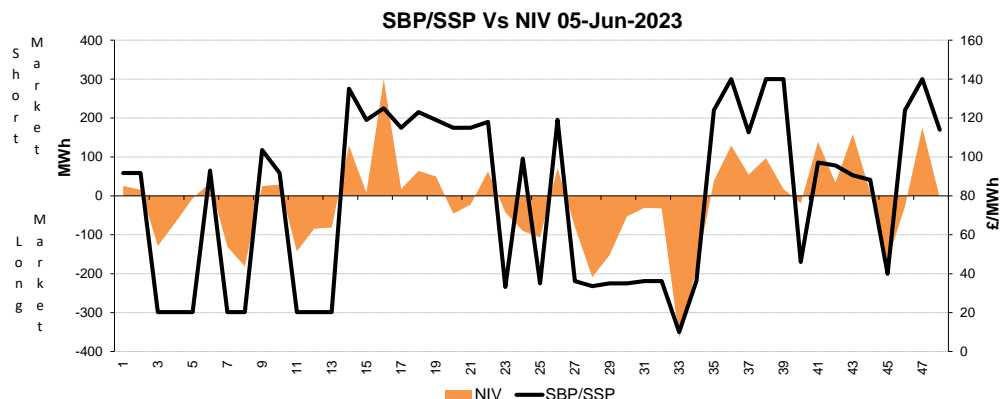
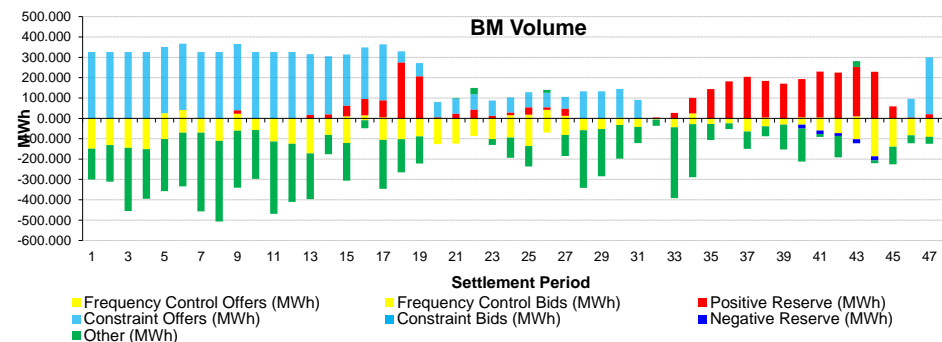
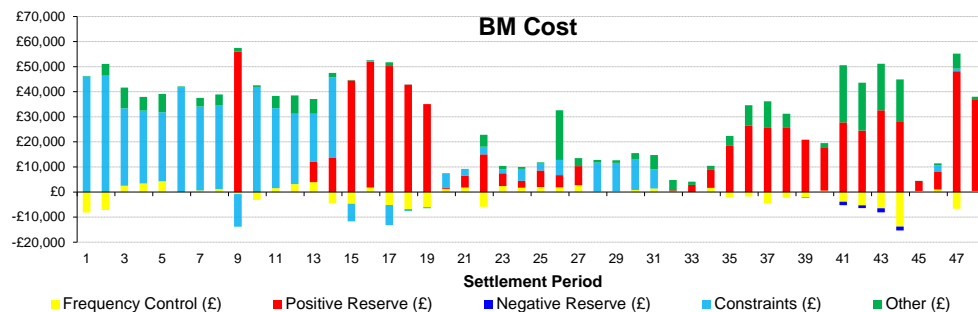
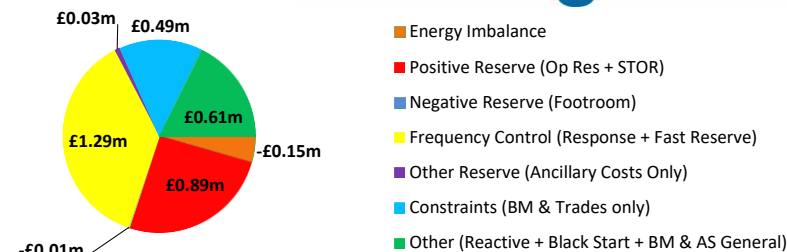
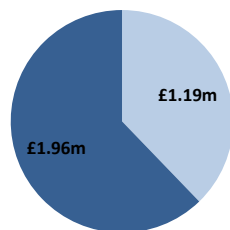
Total Outturn: £3.15m

# Daily Balancing Costs

**nationalgrid**ESO

BM Cost (Indicative)

AS Cost (Estimate)



## Commentary

The market was alternating between long and short throughout the day. Trades were required for Margin. Some BM Actions managed thermal import constraints in Scotland. BM Actions supported Voltage Control.